

- ✓ Maintenance free
- ✓ Sealed stainless steel bearings
- ✓ High flow, low torque

Application

High flow, low rpm, automatic car wash systems, high pressure hose reels

TECHNICAL DATA

Pressure 275 bar (27.5 MPa)
200 bar* (20 Mpa)

Temperature 120°C

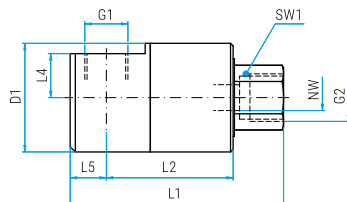
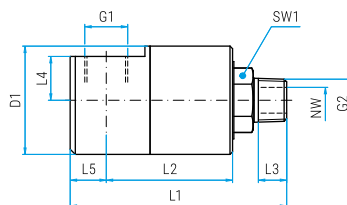
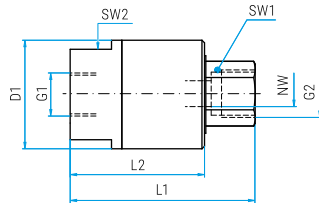
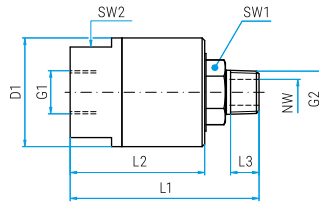
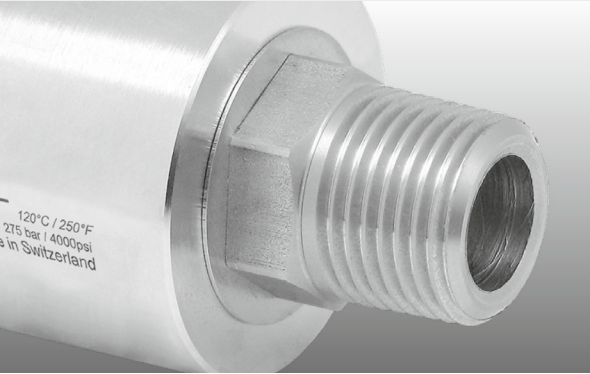
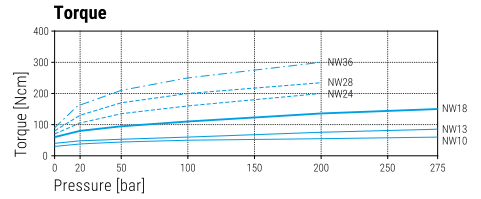
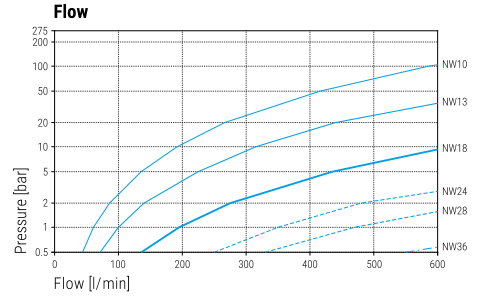
RPM max. 30 rpm

Body brass, nickel plated

Inner part Seal stainless steel
O-ring NBR
(optional: EPDM or FKM)

Bearing 1x thrust ball bearing

Throughput medium pH 3 - 12
10 µm filtered
20 bar compressed air



DGE

| Part No. | G1 (F) | G2 (M) | NW | SW1 | SW2 | L1 | L2 | L3 | D1 | Weight |
|----------|-----------|-----------|----|-----|-----|-----|------|----|----|--------|
| 34.802 | G3/8" F | R3/8" M | 10 | 22 | 35 | 73 | 52 | 11 | 42 | 530 g |
| 34.803 | G1/2" F | R1/2" M | 13 | 22 | 35 | 80 | 55 | 15 | 42 | 530 g |
| 34.804 | G3/4" F | R3/4" M | 18 | 27 | 40 | 88 | 60.5 | 16 | 50 | 780 g |
| 34.805* | G1" F | R1" M | 24 | 36 | 50 | 90 | 60 | 18 | 60 | 1130 g |
| 34.806* | G1 1/4" F | R1 1/4" M | 28 | 38 | 50 | 110 | 71 | 20 | 60 | 1340 g |
| 34.807* | G1 1/2" F | R1 1/2" M | 36 | 50 | 70 | 112 | 73 | 20 | 85 | 2670 g |

| Part No. | G1 (F) | G2 (F) | NW | SW1 | SW2 | L1 | L2 | D1 | Weight |
|----------|-----------|-----------|----|-----|-----|-------|------|----|--------|
| 34.812 | G3/8" F | G3/8" F | 10 | 22 | 35 | 71 | 52 | 42 | 520 g |
| 34.813 | G1/2" F | G1/2" F | 13 | 27 | 35 | 80 | 55 | 42 | 560 g |
| 34.814 | G3/4" F | G3/4" F | 18 | 32 | 40 | 88 | 60.5 | 50 | 810 g |
| 34.815* | G1" F | G1" F | 24 | 36 | 50 | 85 | 60 | 60 | 1120 g |
| 34.816* | G1 1/4" F | G1 1/4" F | 28 | 50 | 50 | 103 | 71 | 60 | 1400 g |
| 34.817* | G1 1/2" F | G1 1/2" F | 36 | 54 | 70 | 105.5 | 73 | 85 | 2630 g |

DGE 90°

| Part No. | G1 (F) | G2 (M) | NW | SW1 | L1 | L2 | L3 | L4 | L5 | D1 | Weight |
|----------|-----------|-----------|----|-----|-------|------|----|----|----|----|--------|
| 34.822 | G3/8" F | R3/8" M | 10 | 22 | 88 | 53 | 11 | 17 | 14 | 42 | 630 g |
| 34.823 | G1/2" F | R1/2" M | 13 | 22 | 97 | 53 | 15 | 16 | 19 | 42 | 650 g |
| 34.824 | G3/4" F | R3/4" M | 18 | 27 | 111 | 61 | 16 | 19 | 22 | 50 | 1000 g |
| 34.825* | G1" F | R1" M | 24 | 36 | 123 | 64 | 18 | 23 | 29 | 60 | 1590 g |
| 34.826* | G1 1/4" F | R1 1/4" M | 28 | 38 | 144 | 72 | 20 | 26 | 33 | 70 | 2080 g |
| 34.827* | G1 1/2" F | R1 1/2" M | 36 | 50 | 155.5 | 80.5 | 20 | 30 | 36 | 85 | 3610 g |

| Part No. | G1 (F) | G2 (F) | NW | SW1 | L1 | L2 | L4 | L5 | D1 | Weight |
|----------|-----------|-----------|----|-----|-----|------|----|----|----|--------|
| 34.832 | G3/8" F | G3/8" F | 10 | 22 | 86 | 53 | 17 | 14 | 42 | 660 g |
| 34.833 | G1/2" F | G1/2" F | 13 | 27 | 97 | 53 | 16 | 19 | 42 | 640 g |
| 34.834 | G3/4" F | G3/4" F | 18 | 32 | 111 | 61 | 19 | 22 | 50 | 1010 g |
| 34.835* | G1" F | G1" F | 24 | 36 | 118 | 64 | 23 | 29 | 60 | 1510 g |
| 34.836* | G1 1/4" F | G1 1/4" F | 28 | 50 | 137 | 72 | 26 | 33 | 70 | 2140 g |
| 34.837* | G1 1/2" F | G1 1/2" F | 36 | 54 | 149 | 80.5 | 30 | 36 | 85 | 3570 g |

Legend

M.. = metric thrust, ..M = male, F = female, G = gas pipe thrust, R = gas pipe thrust conical, QV = quick connects
SV = profile ring fitting, D = diameter, L = length, NW = nominal width, SW = wrench size

Additional Seal Options available

EPDM (E) or FKM/Viton (V). Please indicate letter of seal material after part number.
Minimum orders apply.