

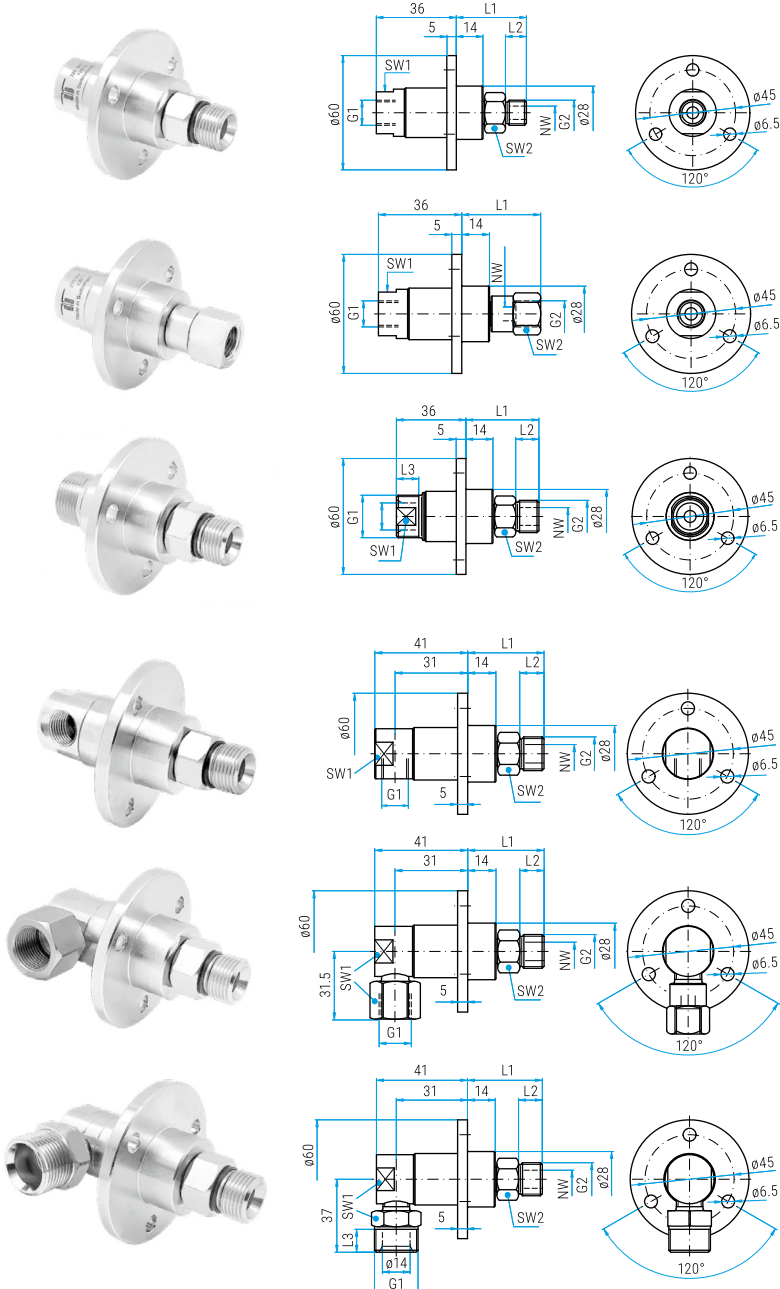
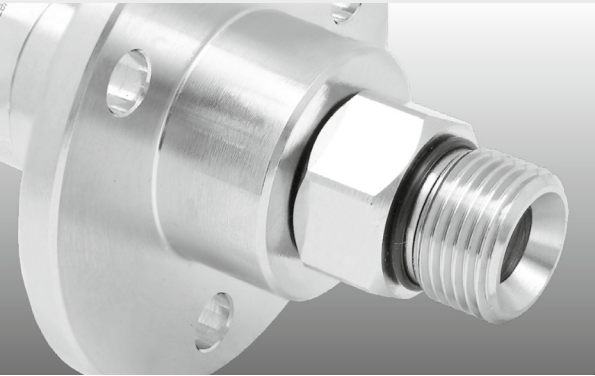
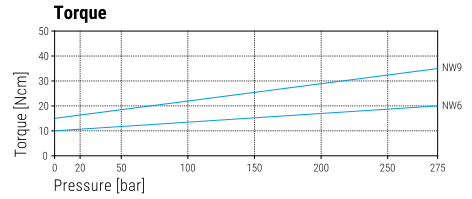
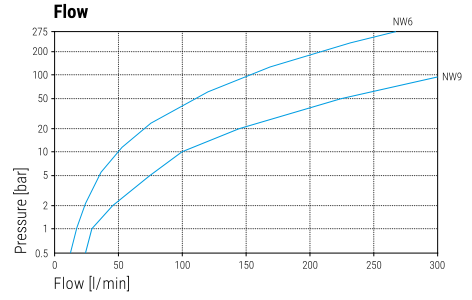
- ✓ High speed, triple bearing system
- ✓ Flange for easy installation
- ✓ Maintenance free
- ✓ Highest precision and quality

Application

High pressure cleaning technology, parts washers, tire cleaners, self rotating applications

TECHNICAL DATA

Pressure 275 bar (27.5 MPa)
Temperature 30°C (at 1'000 rpm)
 120°C (at 30 rpm)
RPM max. 1'000 rpm
Body brass, nickel plated
Inner part stainless steel
Seal O-ring NBR
 (optional: EPDM or FKM)
Bearing 2x radial ball bearings
 1x thrust ball bearing
Throughput medium pH 3 - 12
 10 µm filtered
 20 bar compressed air



DGF

Part No.	G1 (F)	G2 (M)	NW	SW1	SW2	L1	L2	Weight
35.001	G1/4" F	G1/4" M	6	22	19	37	11	290 g
35.003	G1/4" F	G3/8" M	6	22	19	38	12	300 g
35.101	G3/8" F	G1/4" M	6	22	19	37	11	310 g
35.103	G3/8" F	G3/8" M	6	22	19	38	12	290 g
35.603	G3/8" F	G3/8" M	9	22	19	38	12	320 g

Part No.	G1 (F)	G2 (F)	NW	SW1	SW2	L1	Weight
35.002	G1/4" F	G1/4" F	6	22	19	40	310 g
35.004	G1/4" F	G3/8" F	6	22	22	41	310 g
35.102	G3/8" F	G1/4" F	6	22	19	40	310 g
35.104	G3/8" F	G3/8" F	6	22	22	41	310 g

Part No.	G1 (QV)	G2 (M)	NW	SW1	SW2	L1	L2	L3	Weight
35.201	M21x1.5 M	G1/4" M	6	19	19	37	11	12	300 g
35.203	M21x1.5 M	G3/8" M	6	19	19	38	12	12	310 g
35.251	M22x1.5 M	G1/4" M	6	20	19	37	11	12	340 g
35.253	M22x1.5 M	G3/8" M	6	20	19	38	12	12	350 g

DGF 90°

Part No.	G1 (F)	G2 (M)	NW	SW1	SW2	L1	L2	Weight
35.301	G1/4" F	G1/4" M	6	22	19	37	11	350 g
35.303	G1/4" F	G3/8" M	6	22	19	38	12	360 g

Part No.	G1 (F)	G2 (M)	NW	SW1	SW2	L1	L2	Weight
35.401	G3/8" F	G1/4" M	6	22	19	37	11	410 g
35.403	G3/8" F	G3/8" M	6	22	19	38	12	410 g

Part No.	G1 (QV)	G2 (M)	NW	SW1	SW2	L1	L2	L3	Weight
35.503	M21x1.5 M	G3/8" M	6	22	19	38	12	12	410 g
35.553	M22x1.5 M	G3/8" M	6	22	19	38	12	12	410 g

Legend

M., = metric thrust, ..M = male, F = female, G = gas pipe thrust, R = gas pipe thrust conical, QV = quick connects
 SV = profile ring fitting, D = diameter, L = length, NW = nominal width, SW = wrench size

Additional Seal Options available

EPDM (E) or FKM/Viton (V). Please indicate letter of seal material after part number. Minimum orders apply.