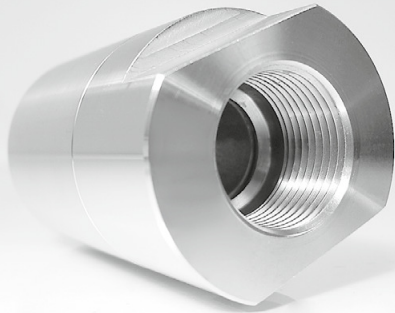


- ✓ Quadruple bearing system
- ✓ High flow
- ✓ Solid stainless steel construction
- ✓ Long service life
- ✓ Maintenance free
- ✓ Corrosion resistant

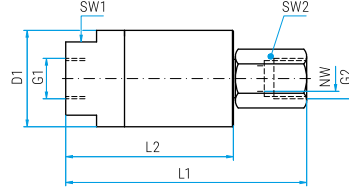
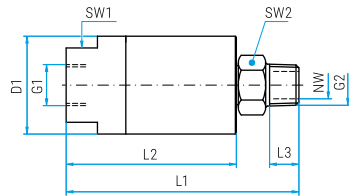
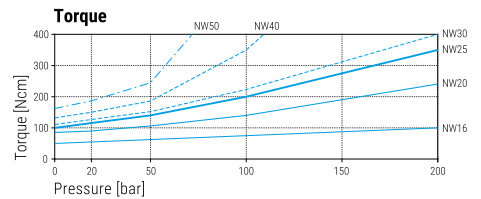
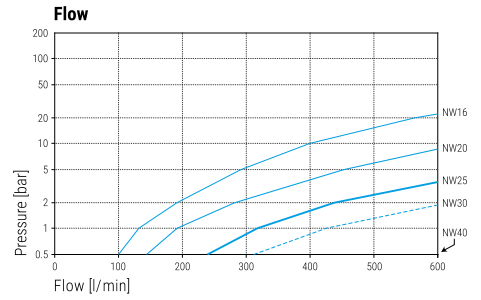


Application

Thrust and radial forces, high pressure, industrial or food service applications

TECHNICAL DATA

Pressure 10-200 bar (1-20 MPa)
Temperature 5°C - 80°C
RPM see chart (max. RPM)
Body stainless steel
Inner part stainless steel
Seal O-ring NBR
 (optional: EPDM or FKM)
Bearing 2x radial ball bearings
 2x thrust ball bearings
Throughput medium pH 3 - 12
 10 µm filtered
 20 bar compressed air



DGR

Part No.	G1 (F)	G2 (M)	NW	SW1	SW2	L1	L2	L3	D1	max. RPM	Weight
34.201	G1/2" F	R1/2" M	16	38	27	119	87	15	50	200	1150 g
34.301	G3/4" F	R3/4" M	20	42	32	127	93	15	55	150	1440 g
34.401	G1" F	R1" M	25	46	36	135	96	18	60	130	1670 g
34.521	G1 1/4" F	R1 1/4" M	30	51	44	142	101	20	60	130	1740 g
34.501	G1 1/2" F	R1 1/2" M	40	65	55	154	104	20	80	100	3020 g
34.601	G2" F	R2" M	50	75	62	166	116	22	90	70	3760 g

Part No.	G1 (F)	G2 (F)	NW	SW1	SW2	L1	L2	D1	max. RPM	Weight
34.202	G1/2" F	G1/2" F	16	38	27	125	87	50	200	1130 g
34.302	G3/4" F	G3/4" F	20	42	32	133	93	55	150	1420 g
34.402	G1" F	G1" F	25	46	36	141	96	60	130	1640 g
34.522	G1 1/4" F	G1 1/4" F	30	51	44	144	101	60	130	1720 g
34.502	G1 1/2" F	G1 1/2" F	40	65	55	154	104	80	100	3060 g
34.602	G2" F	G2" F	50	75	70	170	116	90	70	3780 g

34.911	Seal kit NW 16
34.912	Seal kit NW 20
34.913	Seal kit NW 25
34.943	Seal kit NW 30
34.914	Seal kit NW 40
34.915	Seal kit NW 50

34.920	Repair kit NW 16
34.921	Repair kit NW 20
34.922	Repair kit NW 25
34.944	Repair kit NW 30
34.923	Repair kit NW 40
34.924	Repair kit NW 50

Repair kit includes seal and bearing set.

Legend

M.. = metric thrust, ..M = male, F = female, G = gas pipe thrust, R = gas pipe thrust conical, QV = quick connects
 SV = profile ring fitting, D = diameter, L = length, NW = nominal width, SW = wrench size

Additional Seal Options available

EPDM (E) or FKM/Viton (V). Please indicate letter of seal material after part number.
 Minimum orders apply.