

- ✓ Very low torque
- ✓ Sealed stainless steel bearings
- ✓ Maintenance free
- ✓ Easy rotation at maximum pressure

### Application

High and low pressure cleaning, hose connections, ceiling booms, hydraulic

#### TECHNICAL DATA

**Pressure** 275 bar (27.5 MPa)  
**Temperature** 120°C  
**RPM** max. 30 rpm

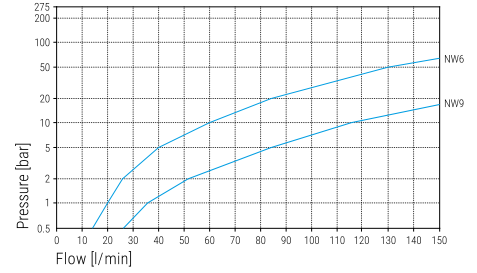
**Body** brass, nickel plated

**Inner part** stainless steel  
**Seal** O-ring NBR  
 (optional: EPDM or FKM)

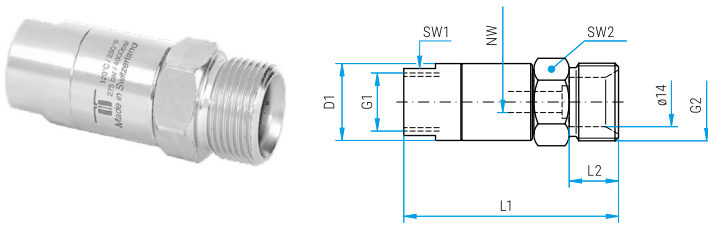
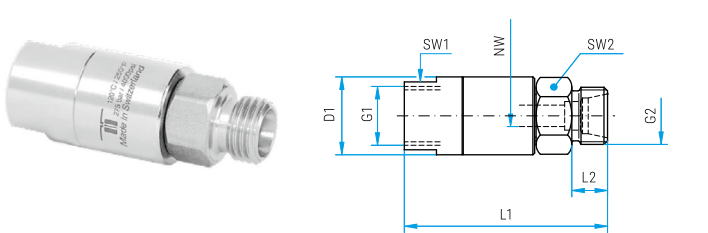
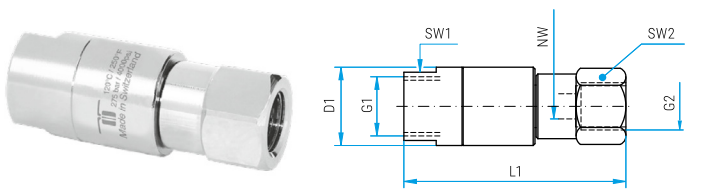
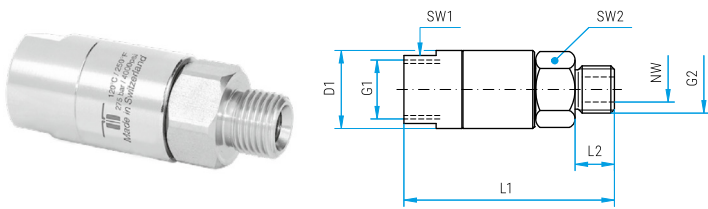
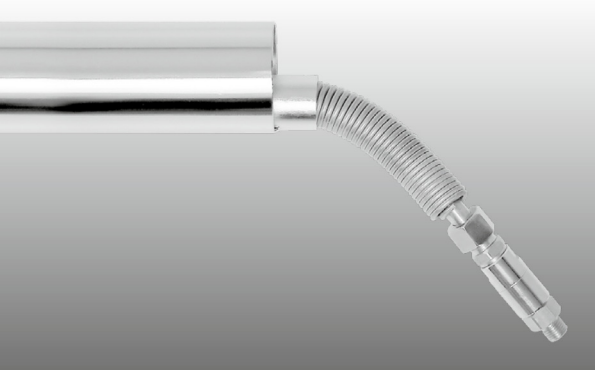
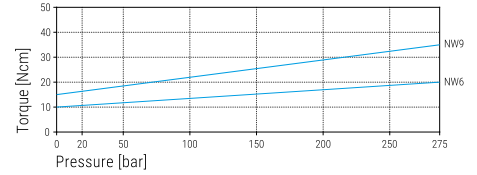
**Bearing** 1x thrust ball bearing  
 1x radial ball bearing

**Throughput medium** pH 3 - 12  
 10 µm filtered  
 20 bar compressed air

#### Flow



#### Torque



#### DGS

Part No.	G1 (F)	G2 (M)	NW	SW1	SW2	L1	L2	D1	Weight
30.001	G1/4" F	G1/4" M	6	19	19	59	11	22	120 g
30.003	G1/4" F	G3/8" M	6	19	19	60	12	22	130 g
30.101	G3/8" F	G1/4" M	6	22	19	59	11	25	120 g
30.103	G3/8" F	G3/8" M	6	22	19	60	12	25	130 g
30.603	G3/8" F	G3/8" M	9	22	19	62	12	25	140 g

Part No.	G1 (F)	G2 (F)	NW	SW1	SW2	L1	D1	Weight
30.002	G1/4" F	G1/4" F	6	19	19	62	22	130 g
30.004	G1/4" F	G3/8" F	6	19	22	63	22	150 g
30.102	G3/8" F	G1/4" F	6	22	19	62	25	140 g
30.104	G3/8" F	G3/8" F	6	22	22	63	25	150 g
30.604	G3/8" F	G3/8" F	9	22	22	65	25	160 g

Part No.	G1 (F)	G2 (SV)	NW	SW1	SW2	L1	L2	D1	Weight
30.005	G1/4" F	M14x1.5 M	6	19	17	57	10	22	110 g
30.006	G1/4" F	M16x1.5 M	6	19	19	57	10	22	120 g
30.007	G1/4" F	M18x1.5 M	6	19	19	57	10	22	120 g
30.105	G3/8" F	M14x1.5 M	6	22	17	57	10	25	120 g
30.106	G3/8" F	M16x1.5 M	6	22	19	57	10	25	120 g
30.107	G3/8" F	M18x1.5 M	6	22	19	57	10	25	120 g
30.607	G3/8" F	M18x1.5 M	9	22	19	59	10	25	130 g

Part No.	G1 (F)	G2 (QV)	NW	SW1	SW2	L1	L2	D1	Weight
30.008	G1/4" F	M21x1.5 M	6	19	22	61	14	22	140 g
30.009	G1/4" F	M22x1.5 M	6	19	22	61	14	22	140 g
30.108	G3/8" F	M21x1.5 M	6	22	22	61	14	25	120 g
30.109	G3/8" F	M22x1.5 M	6	22	22	61	14	25	150 g

WWW.MOSMATIC.COM

Legend

M.. = metric thrust, ..M = male, F = female, G = gas pipe thrust, R = gas pipe thrust conical, QV = quick connects  
 SV = profile ring fitting, D = diameter, L = length, NW = nominal width, SW = wrench size

Additional Seal Options available

EPDM (E) or FKM/Viton (V). Please indicate letter of seal material after part number. Minimum orders apply.