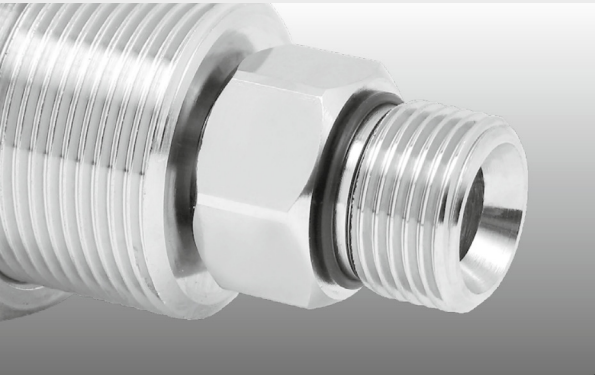


- ✓ High speed, triple bearing systems
- ✓ Bulkhead fitting for mounting
- ✓ Corrosion resistant
- ✓ Highest quality and precision
- ✓ Maintenance free



Application

Surface cleaners, parts washers, tire cleaners, high rpm, self rotating applications

TECHNICAL DATA

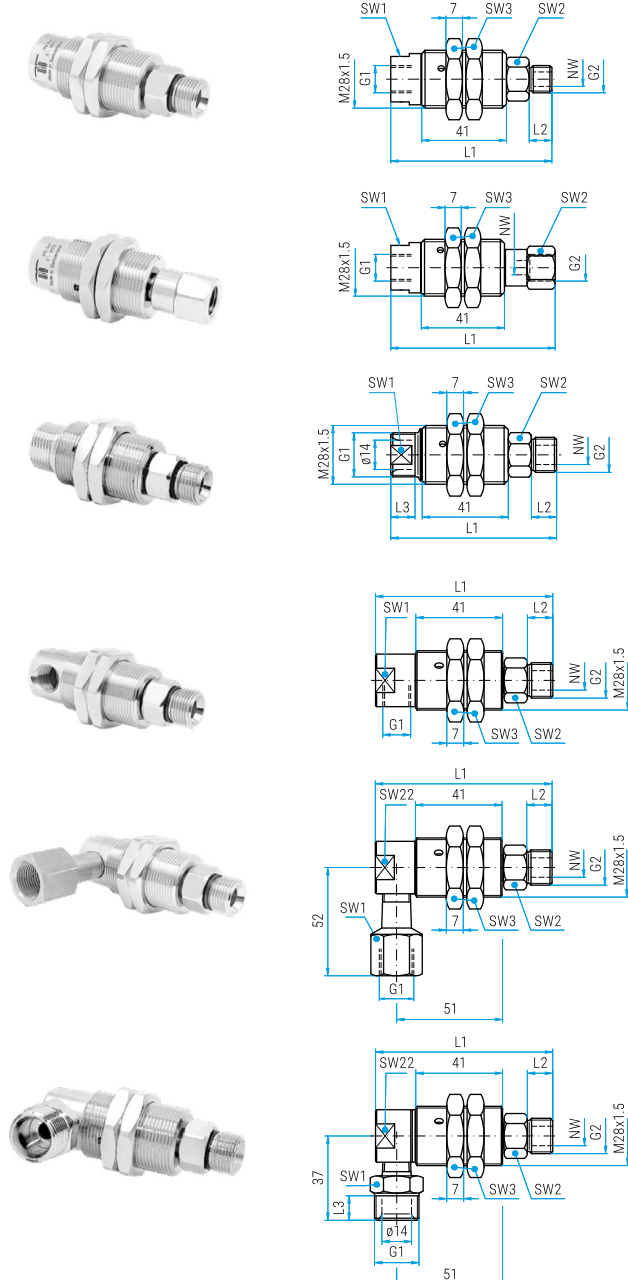
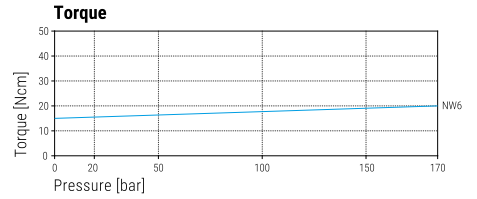
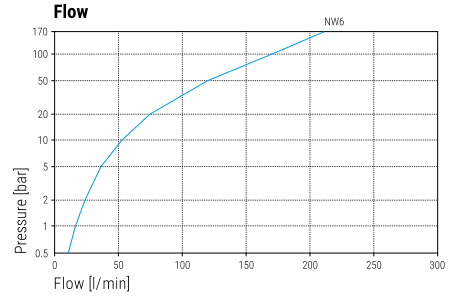
Pressure 170 bar (17 MPa)
Temperature 5°C - 120°C
RPM max. 2'000 rpm

Body DXG: brass, nickel plated
 DXGI: stainless steel

Inner part stainless steel
Seal ceramic

Bearing 2x radial ball bearings
 1x thrust ball bearing

Throughput medium pH 3 - 12
 10 µm filtered
 20 bar compressed air



DXG DXGI

Part No.	Part No.	G1 (F)	G2 (M)	NW	SW1	SW2	SW3	L1	L2	Weight
37.001	37.011	G1/4" F	G1/4" M	6	22	19	34*	79	11	280 g
37.003	37.013	G1/4" F	G3/8" M	6	22	19	34*	80	12	290 g
37.101	37.111	G3/8" F	G1/4" M	6	22	19	34*	79	11	270 g
37.103	37.113	G3/8" F	G3/8" M	6	22	19	34*	80	12	280 g

Part No.	Part No.	G1 (F)	G2 (F)	NW	SW1	SW2	SW3	L1	Weight
37.002	37.012	G1/4" F	G1/4" F	6	22	19	34*	82	220 g
37.004	37.014	G1/4" F	G3/8" F	6	22	22	34*	83	220 g
37.102	37.112	G3/8" F	G1/4" F	6	22	19	34*	82	210 g
37.104	37.114	G3/8" F	G3/8" F	6	22	22	34*	83	210 g

* at DXGI: 36mm

Part No.	G1 (QV)	G2 (M)	NW	SW1	SW2	SW3	L1	L2	L3	Weight
37.201	M21x1.5 M	G1/4" M	6	19	19	34	79	11	12	240 g
37.203	M21x1.5 M	G3/8" M	6	19	19	34	80	12	12	270 g
37.251	M22x1.5 M	G1/4" M	6	20	19	34	79	11	12	230 g
37.253	M22x1.5 M	G3/8" M	6	20	19	34	80	12	12	260 g

DXG 90° DXGI 90°

Part No.	Part No.	G1 (F)	G2 (M)	NW	SW1	SW2	SW3	L1	L2	Weight
37.301	37.311	G1/4" F	G1/4" M	6	22	19	34*	84	11	270 g
37.303	37.313	G1/4" F	G3/8" M	6	22	19	34*	85	12	280 g

* at DXGI: 36mm

Part No.	G1 (F)	G2 (M)	NW	SW1	SW2	SW3	L1	L2	Weight
37.401	G3/8" F	G1/4" M	6	22	19	34	84	11	370 g
37.403	G3/8" F	G3/8" M	6	22	19	34	85	12	380 g

Part No.	G1 (QV)	G2 (M)	NW	SW1	SW2	SW3	L1	L2	L3	Weight
37.503	M21x1.5 M	G3/8" M	6	22	19	34	85	12	14	320 g
37.553	M22x1.5 M	G3/8" M	6	22	19	34	85	12	14	330 g

36.901	Seal kit NW 6
--------	---------------

WWW.MOSMATIC.COM

Legend

M.. = metric thrust, ..M = male, F = female, G = gas pipe thrust, R = gas pipe thrust conical, QV = quick connects
 SV = profile ring fitting, D = diameter, L = length, NW = nominal width, SW = wrench size