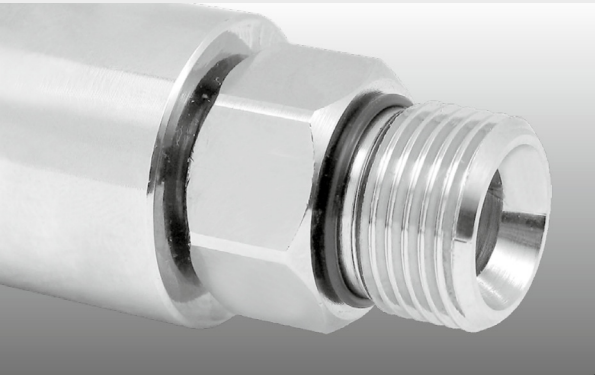


- ✓ High speed, triple bearing systems
- ✓ Seal failure warning, through weep holes
- ✓ Stainless steel
- ✓ Maintenance free



### Application

High pressure cleaning technology, parts washers, tire cleaners, high rpm

#### TECHNICAL DATA

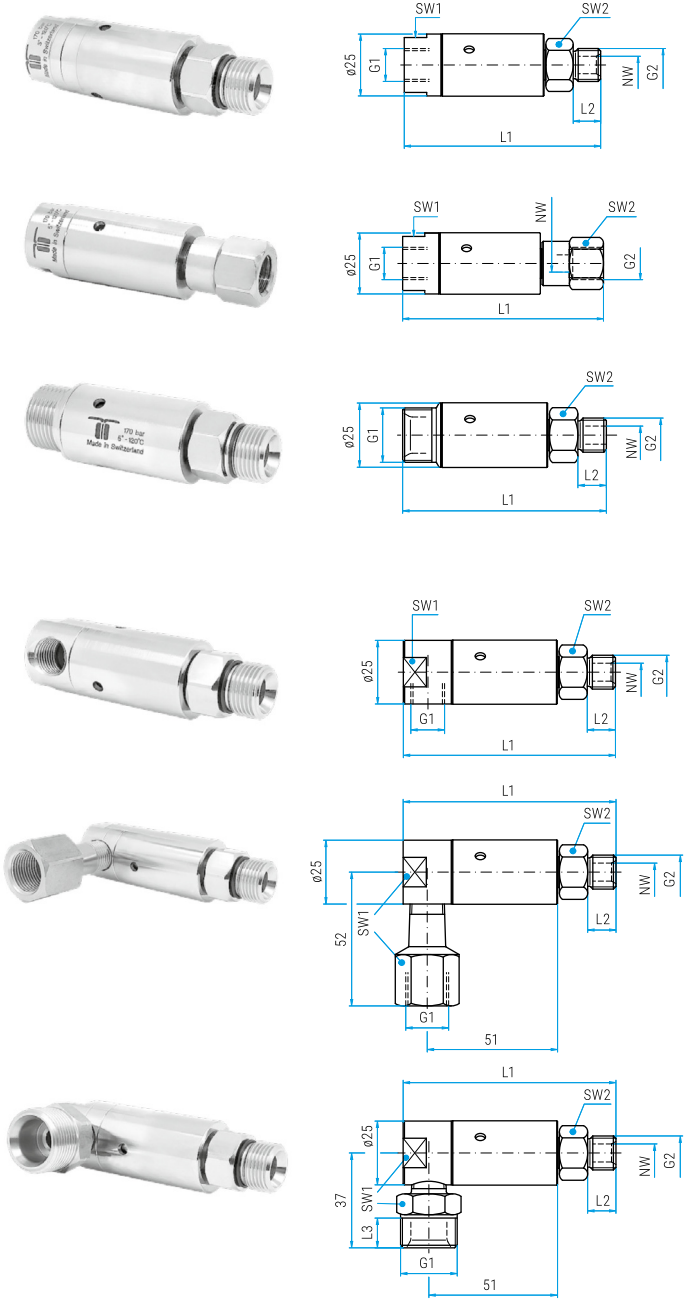
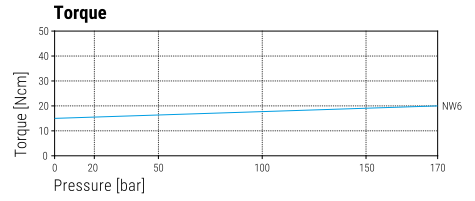
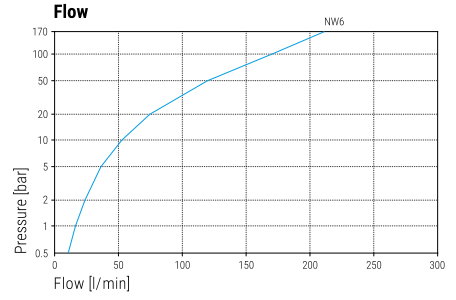
**Pressure** 170 bar (17 MPa)  
**Temperature** 5°C - 120°C  
**RPM** max. 2'000 rpm

**Body** DXL: brass, nickel plated  
 DXLI: stainless steel

**Inner part** stainless steel  
**Seal** ceramic

**Bearing** 2x radial ball bearings  
 1x thrust ball bearing

**Throughput medium** pH 3 - 12  
 10 µm filtered  
 20 bar compressed air



DXL		DXLI		G1 (F)	G2 (M)	NW	SW1	SW2	L1	L2	Weight
<b>36.001</b>	<b>36.011</b>	G1/4" F	G1/4" M	6	22	19	79	11	190 g		
<b>36.003</b>	<b>36.013</b>	G1/4" F	G3/8" M	6	22	19	80	12	200 g		
<b>36.101</b>	<b>36.111</b>	G3/8" F	G1/4" M	6	22	19	79	11	180 g		
<b>36.103</b>	<b>36.113</b>	G3/8" F	G3/8" M	6	22	19	80	12	190 g		

Part No.	Part No.	G1 (F)	G2 (F)	NW	SW1	SW2	L1	Weight
<b>36.002</b>	<b>36.012</b>	G1/4" F	G1/4" F	6	22	19	82	210 g
<b>36.004</b>	<b>36.014</b>	G1/4" F	G3/8" F	6	22	22	83	220 g
<b>36.102</b>	<b>36.112</b>	G3/8" F	G1/4" F	6	22	19	82	190 g
<b>36.104</b>	<b>36.114</b>	G3/8" F	G3/8" F	6	22	22	83	210 g

Part No.	G1 (QV)	G2 (M)	NW	SW2	L1	L2	Weight
<b>36.201</b>	M21x1.5 M	G1/4" M	6	19	79	11	190 g
<b>36.203</b>	M21x1.5 M	G3/8" M	6	19	80	12	200 g
<b>36.251</b>	M22x1.5 M	G1/4" M	6	19	79	11	180 g
<b>36.253</b>	M22x1.5 M	G3/8" M	6	19	80	12	190 g

DXL 90°								
Part No.	G1 (F)	G2 (M)	NW	SW1	SW2	L1	L2	Weight
<b>36.301</b>	G1/4" F	G1/4" M	6	22	19	84	11	200 g
<b>36.303</b>	G1/4" F	G3/8" M	6	22	19	85	12	200 g

Part No.	G1 (F)	G2 (M)	NW	SW1	SW2	L1	L2	Weight
<b>36.401</b>	G3/8" F	G1/4" M	6	22	19	84	11	250 g
<b>36.403</b>	G3/8" F	G3/8" M	6	22	19	85	12	240 g

Part No.	G1 (QV)	G2 (M)	NW	SW1	SW2	L1	L2	Weight
<b>36.503</b>	M21x1.5 M	G3/8" M	6	22	19	85	12	240 g
<b>36.553</b>	M22x1.5 M	G3/8" M	6	22	19	85	12	250 g

<b>36.901</b>	Seal kit NW 6
---------------	---------------

WWW.MOSMATIC.COM