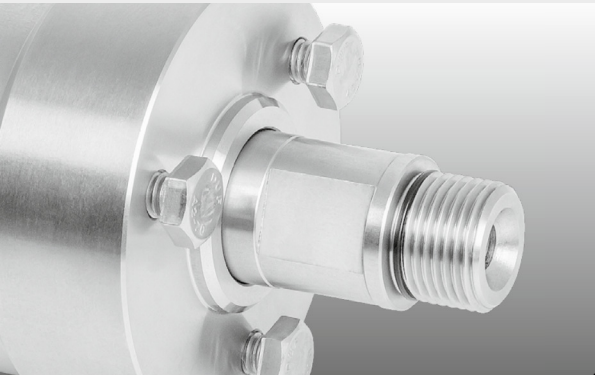


- ✓ Quadruple bearing system
- ✓ Highest quality and precision
- ✓ Very low torque
- ✓ Maintenance free
- ✓ Side connection for weep capture
- ✓ Complete stainless steel construction



Application

High rpm, high pressure, self rotating applications, parts washers, tire cleaners, HP cleaning technology

TECHNICAL DATA

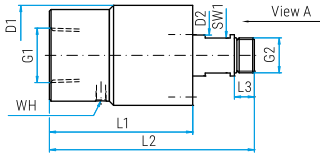
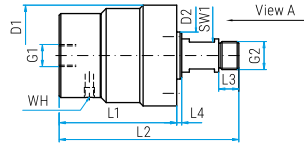
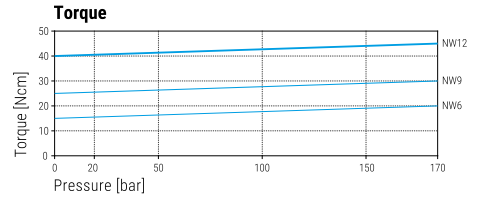
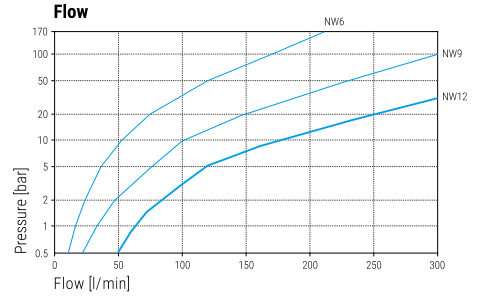
Pressure 170 bar (17 MPa)
Temperature 120°C
RPM max. 2'000 rpm

Body stainless steel

Inner part Seal stainless steel ceramic

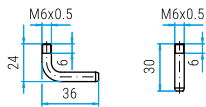
Bearing 2x radial ball bearings
2x thrust ball bearings

Throughput medium pH 3 - 12
10 µm filtered
20 bar compressed air



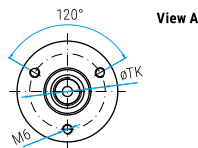
WH (weep hole)

Optional: Pipes for weep hole



Part No. 902.745

Part No. 902.765



DXTI

Part No.	G1 (F)	G2 (M)	NW	SW1	L1	L2	L3	D1	D2	TK	Weight
39.003	G1/4" F	G3/8" M	6	16	70	107	12	60	28	45	1230 g
39.103	G3/8" F	G3/8" M	6	16	72	109	12	60	28	45	1280 g
39.603	G3/8" F	G3/8" M	9	16	72	109	12	60	28	45	1280 g

DXTI

Part No.	G1 (F)	G2 (M)	NW	SW1	L1	L2	L3	D1	D2	TK	Weight
39.805	G1/2" F	G1/2" M	12	21	86	123	12	60	25	50	1670 g
39.906	G3/4" F	G1/2" M	12	21	86	123	12	60	25	50	1640 g
39.908	G1" F	G1/2" M	12	21	86	123	12	60	25	50	1580 g

36.901	Seal kit NW 6
36.914	Seal kit NW 9
36.915	Seal kit NW 12

Legend

M.. = metric thrust, ..M = male, F = female, G = gas pipe thrust, R = gas pipe thrust conical, QV = quick connects
 SV = profile ring fitting, D = diameter, L = length, NW = nominal width, SW = wrench size