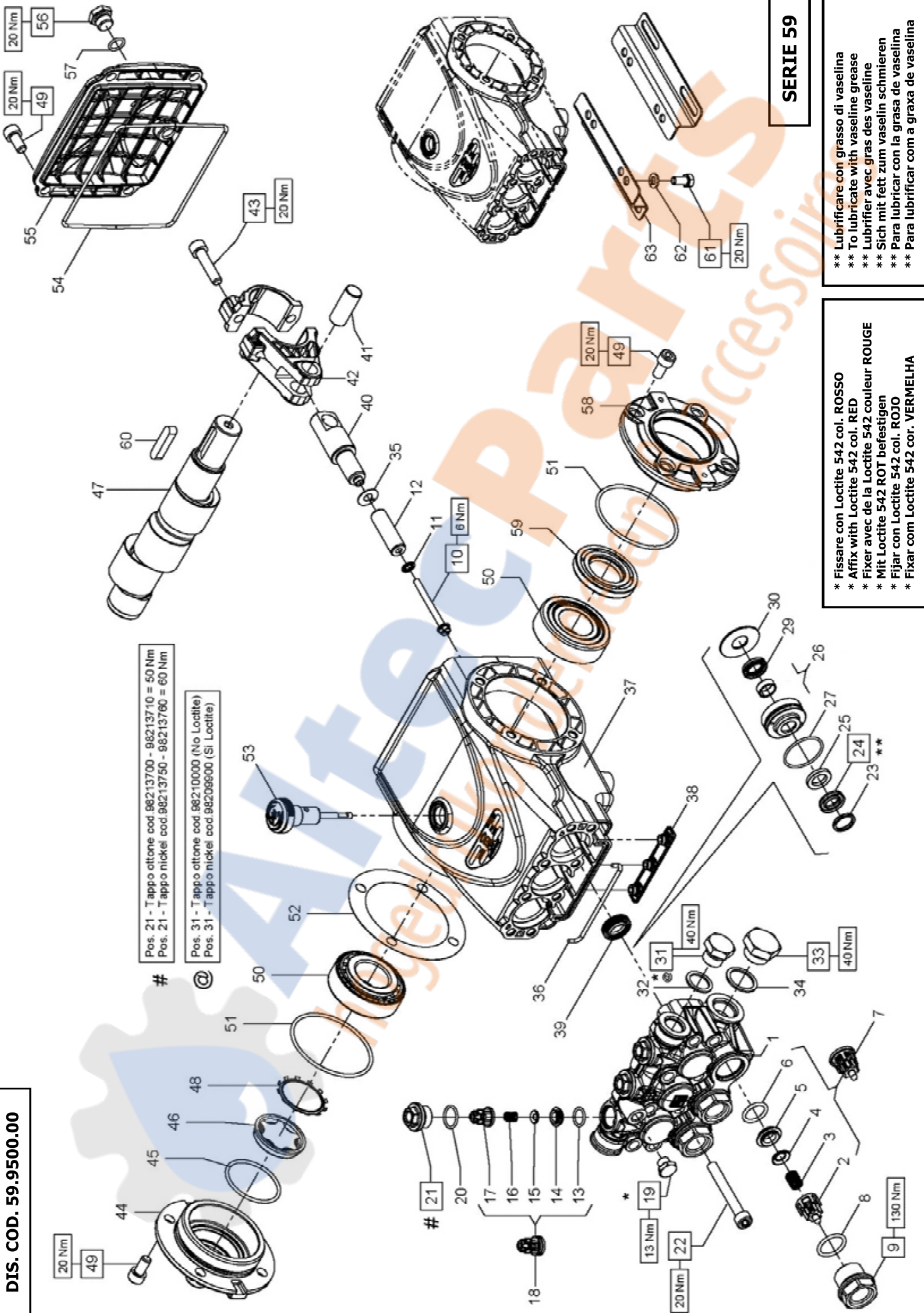


DIS. COD. 59.9500.00



Pos. 21 - Tappo ottone cod. 98213700 - 98213710 = 50 Nm
 Pos. 21 - Tappo nickel cod. 98213750 - 98213760 = 60 Nm

@ Pos. 31 - Tappo ottone cod. 98210000 (No Loctite)
 Pos. 31 - Tappo nickel cod. 98209900 (Si Loctite)

SERIE 59

** Lubrificare con grasso di vaselina
 ** To lubricate with vaseline grease
 ** Lubrifier avec gras des vaseline
 ** Sich mit fett zum vaselin schmieren
 ** Para lubricar con la grasa de vaselina
 ** Para lubrificar com a graxa de vaselina

* Fissare con Loctite 542 col. ROSSO
 * Affix with Loctite 542 col. RED
 * Fixer avec de la Loctite 542 couleur ROUGE
 * Mit Loctite 542 ROT befestigen
 * Fijar con Loctite 542 col. ROJO
 * Fixar com Loctite 542 cor. VERMELHA

E3B1911 - E3C1713 - E3C1515 - E3C1218
E3C1021 - E3B1515 - E3B1713 - E3B1021
E3A1515 - E3B1218 - E3A1713

PISTON D. 18	PISTON D. 20	PISTON D. 22
E3B1911 E3C1713	E3C1515 E3C1218 E3C1021 E3B1515 E3B1713	E3B1021 E3A1515 E3B1218 E3A1713

POS	COD.	DESCRIZIONE - DESCRIPTION - KIT	NR
1	59.1202.41 59.1203.41 59.1204.41	Testata pompa D. 18 Testata pompa D. 20 Testata pompa D. 22	1
2	36.2025.51	Guida valvola d'aspirazione	269 3
3	94.7376.00	Molla Dm. 9.4x14.8	269 3
4	36.2001.76	Valvola sferica	269 3
5	36.2003.66	Sede valvola d'aspirazione	269 3
6	90.3841.00	OR D.17.13x2.62 NBR 70 SH 3068	269 3
7	36.7115.01	Gr. valvola d'aspirazione	269 3
8	90.3847.00	OR D.20.24x2.62 NBR 70 SH 3081	270 3
9	98.2226.00	Tappo M 24.0x1.5x16.7	270 3
10	99.1690.00	Vite M 5x55	3
11	96.6905.00	Rosetta D. 5.0x11.5x0.4	3
12	58.0402.09 59.0400.09 59.0401.09	Pistone D. 18x42 Pistone D. 20x42 Pistone D. 22x42	3
13	90.3674.00	OR D.12.00x2.00 NBR 70 SH	269 3
14	36.2113.66	Sede valvola di mandata	269 3
15	36.2112.76	Valvola sferica	269 3
16	94.7333.00	Molla Dm. 6.2x10.4	269 3
17	36.2111.51	Guida valvola di mandata	269 3
18	36.7193.01	Gr. valvola di mandata	269 3
19	98.1966.00	Tappo G 1/8"x8	1
20	90.3593.00	OR D.15.60x1.78 NBR 70 SH 2062	270 3
21	98.2137.00	Tappo M18x1.5x10 D.23 - D. 12	270 3

KIT RICAMBI - SPARE KITS

KIT Nr.	KIT 269	KIT 270	KIT 271	PISTONE - PISTON D. 18	PISTONE - PISTON D. 20	PISTONE - PISTON D. 22
Posizioni include Positions included	2 - 3 - 4 5 - 6 - 13 14 - 15 - 16 17 - (7) - (18)	8 - 9 20 - 21	39	KIT 284 23 - 24 25 - 26 27 - 29 29	KIT 285 23 - 24 25 - 26 27 - 29 29 30	KIT 286 23 - 24 25 - 26 27 - 29 29 30
Nr. Pcs.	3	3	3	3	3	3

POS	COD.	DESCRIZIONE - DESCRIPTION - KIT	NR
22	99.3175.00	Vite M 8x60 UNI 5931	8
23	63.1011.51 66.1007.51 66.1009.51	Anello di testa D. 18 Anello di testa D. 20 Anello di testa D. 22	284-289 285-290 286-291
24	90.2653.50 90.2691.00 90.2716.00	An. ten. alt. D.18x28x6/3.7 HP 284-289 An. ten. alt. D.20x30x6/3.7 HP 285-290 An. ten. alt. D.22x32x6/3.7 HP 286-291	3
25	90.5111.50 90.5134.00 90.5148.50	An. antiest. D. 18.0x28.0x2.0 An. antiest. D. 20.0x30.0x2.0 An. antiest. D. 22.0x32.0x2.0	284-289 285-290 286-291
26	59.6060.01 59.6061.01 59.6062.01	Gr. supp. guarn./bussola D. 18 Gr. supp. guarn./bussola D. 20 Gr. supp. guarn./bussola D. 22	289 290 291
27	90.3612.00	OR D. 31.47x1.78 NBR 70 SH. 2125 284-285-286-289-290-291	3
29	90.2650.00 90.2690.00 90.2715.00	An. ten. alt. D.18x24x5.0 LP An. ten. alt. D.20x28x6.5 LP An. ten. alt. D.22x30x6.5 LP	284-289 285-290 286-291
30	59.2107.70 59.2108.70 59.2109.70	Anello per tenuta D. 18 Anello per tenuta D. 20 Anello per tenuta D. 22	289 290 291
31	98.2100.00	Tappo G 3/8"x13	1
32	96.7380.00	Rosetta D. 17.5x23.0x1.5	1
33	98.2176.00	Tappo G 1/2"x10	1
34	96.7514.00	Rosetta D. 21.5x27.0x1.5	1
35	96.6990.00	Rosetta D. 7.5x23.0x0.5	3
36	59.2110.82	Guarnizione spugna D. 3x103	1
37	59.0100.22	Carter pompa	1
38	58.2104.51	Protezione	1
39	90.1565.50	Anello rad. D. 15.0x24.0x5.0/7.0	271 3
40	59.050066	Guida pistone	3
41	97.7399.00	Spinotto D. 14x34	3

POS	COD.	DESCRIZIONE - DESCRIPTION - KIT	NR
42	59.0300.01	Biella completa	3
43	99.3099.00	Vite serraggio biella	6
44	47.1512.22	Coperchio laterale lato spia	1
45	90.3877.00	OR D. 39.34x2.62 NBR 70 SH. 3156	1
46	70.2118.01	Spia livello olio	1
47	59.0201.35 59.0202.35 59.0203.35	Alb. ecc. C.13 - E3B1021 E3C1021 E3A1515 Alb. ecc. C.12 - E3B1218 E3C1218 E3B1515 E3A1713 Alb. ecc. C.10 - E3C1515 E3B1911 E3B1713 E3C1713	1
48	90.0756.00	Anello d'arresto ZJ45	1
49	99.3039.00	Vite M 8x16 UNI 5931	12
50	91.8375.00	Cuscinetto a rulli	2
51	90.3913.00	OR D. 67.95x2.62 NBR 70 SH. 3628	2
52	97.5680.00 97.5978.00	Spessore D. 74.5x104x0.3 Spessore D. 74.5x104x0.1	1
53	98.2103.00	Asta livello olio G 3/8"x51	1
54	90.3922.00	OR D. 133.02x2.62 NBR 70 SH. 3525	1
55	59.1600.22	Coperchio posteriore carter	1
56	98.2042.50	Tappo G 1/4"x9 TE17 - Zinc.	1
57	90.3585.00	OR D. 10.82x1.78 NBR 70 SH. 2043	1
58	47.1510.22	Coperchio laterale lato PTO	1
59	90.1648.00	Anello rad. D. 30.0x55.0x7.0	1
60	91.4892.00	Linguetta 8.0x7.0x35.0	1
61	99.3037.00	Vite M 8x16 UNI 5739	4
62	96.7016.00	Rosetta D. 8.4x14.4x2.0	4
63	50.2000.74	Piedino pompa	2