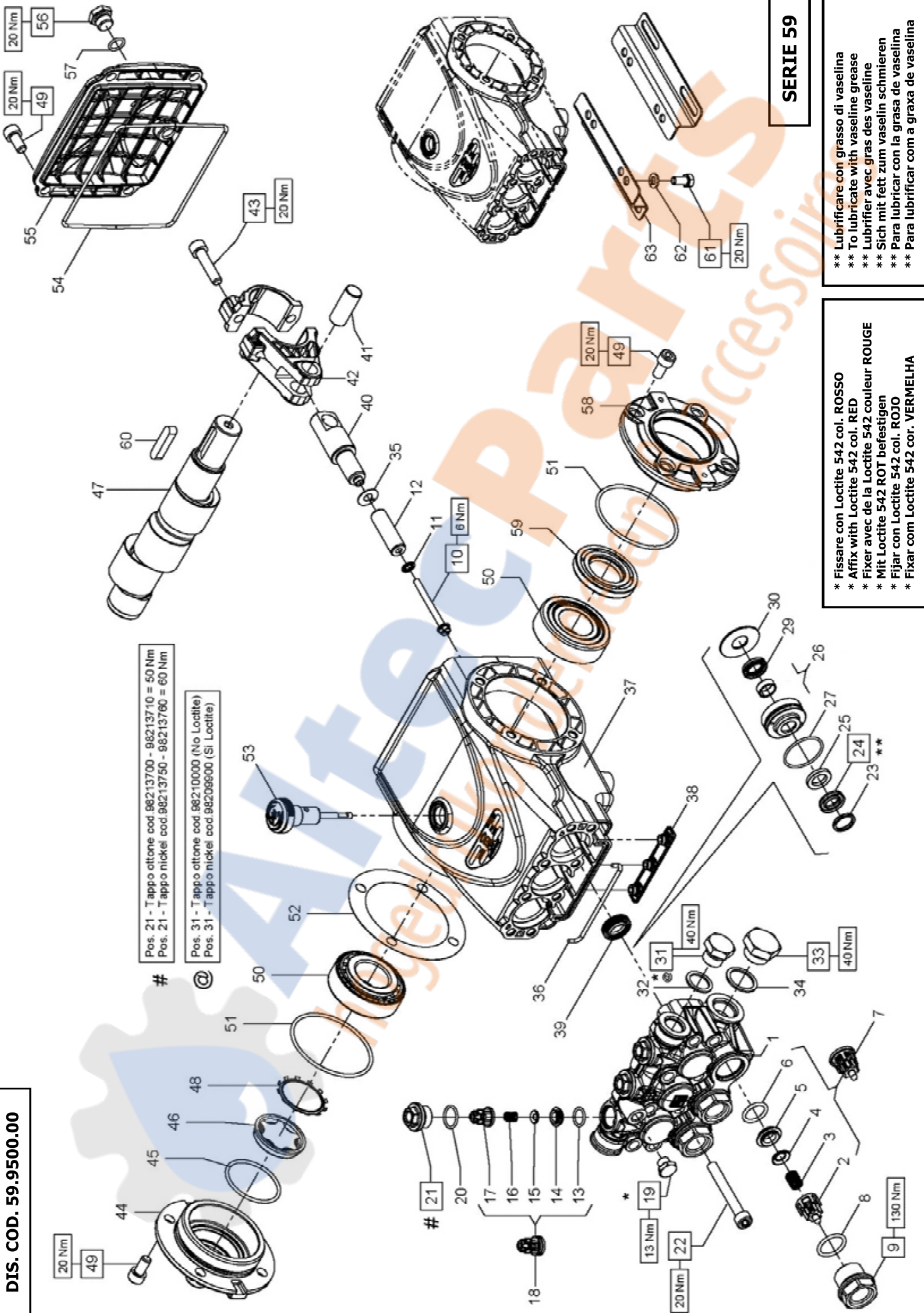


**DIS. COD. 59.9500.00**



# Pos. 21 - Tappo ottone cod. 98213700 - 98213710 = 50 Nm  
 Pos. 21 - Tappo nickel cod. 98213750 - 98213760 = 60 Nm

@ Pos. 31 - Tappo ottone cod. 98210000 (No Loctite)  
 Pos. 31 - Tappo nickel cod. 98209900 (Si Loctite)

**SERIE 59**

\*\* Lubrificare con grasso di vaselina  
 \*\* To lubricate with vaseline grease  
 \*\* Lubrifier avec gras des vaseline  
 \*\* Sich mit fett zum vaselin schmieren  
 \*\* Para lubricar con la grasa de vaselina  
 \*\* Para lubrificar com a graxa de vaselina

\* Fissare con Loctite 542 col. ROSSO  
 \* Affix with Loctite 542 col. RED  
 \* Fixer avec de la Loctite 542 couleur ROUGE  
 \* Mit Loctite 542 ROT befestigen  
 \* Fijar con Loctite 542 col. ROJO  
 \* Fixar com Loctite 542 cor. VERMELHA

**E3A2113 - E3A2115 - E3B2511 - E3B2513  
E3B2515 - E3B2118 - E3B2121 - E3C2513  
E3C2515 - E3C2518 - E3C2521 - E3E2813  
E3E2815 - E3E2517 - E3E2520**

D. 13	D. 15	D. 18	D. 20
E3E2813 E3E2815	E3E2517 E3E2520	E3B2511 E3C2513	E3B2513 - E3B2515 - E3C2515 E3C2518 - E3C2521
<b>D. 22</b>			
E3A2113 - E3A2115 - E3B2118 - E3B2121			

POS	COD.	DESCRIZIONE - DESCRIPTION - KIT	NR
1	59.1210.41 59.1211.41 59.1212.41 59.1213.41 59.1214.41	Testata pompa D. 13 - NICKEL Testata pompa D. 15 - NICKEL Testata pompa D. 18 - NICKEL Testata pompa D. 20 - NICKEL Testata pompa D. 22 - NICKEL	1
2	36.2025.51	Guida valvola d'aspirazione	269
3	94.7376.00	Molla Dm. 9.4x14.8	269
4	36.2001.76	Valvola sferica	269
5	36.2003.66	Sede valvola d'aspirazione	269
6	90.3841.00	OR D. 17.13x2.62 NBR 70 SH 3068	269
7	36.7115.01	Gr. valvola d'aspirazione	269
8	90.3847.00	OR D.20.24x2.62 NBR 70 SH 3081 292	292
9	98.2225.00	Tappo M 24x1.5x16.7	292
10	99.1690.00	Vite M 5x55	3
11	96.6905.00	Rosetta D. 5.0x11.5x0.4	3
12	58.0400.09 58.0401.09 58.0402.09 59.0400.09 59.0401.09	Pistone D. 13x42 Pistone D. 15x42 Pistone D. 18x42 Pistone D. 20x42 Pistone D. 22x42	3
13	90.3674.00	OR D.12.00x2.00 NBR 70 SH	269
14	36.2113.66	Sede valvola di mandata	269
15	36.2112.76	Valvola sferica	269

**KIT RICAMBI - SPARE KITS**

KIT Nr.	PIST. D. 13			PIST. D. 15			PIST. D. 18			PIST. D. 20			PIST. D. 22		
	KIT 269	KIT 292	KIT 271	KIT 282	KIT 287	KIT 283	KIT 288	KIT 284	KIT 289	KIT 285	KIT 290	KIT 286	KIT 291		
2-3-4 5-6-13 14-15-16 17-(7)-(18)	8-9 20-21	39	23-24 25-26 27-29 30	23-24 25-26 27-29 30	23-24 25-26 27-29 30	23-24 25-26 27-29 30	23-24 25-26 27-29 30	23-24 25-26 27-29 30	23-24 25-26 27-29 30	23-24 25-26 27-29 30	23-24 25-26 27-29 30	23-24 25-26 27-29 30	23-24 25-26 27-29 30		
Nr. Pcs.	3	3	3	3	1	3	1	3	1	3	1	3	1		

POS	COD.	DESCRIZIONE - DESCRIPTION - KIT	NR
16	94.7333.00	Molla Dm. 6.2x10.4	269
17	36.2111.51	Guida valvola di mandata	269
18	36.7193.01	Gr. valvola di mandata	269
19	98.1967.00	Tappo G 1/8"x8	1
20	90.3593.00	OR D.15.60x1.78 NBR 70 SH 2062 292	3
21	98.2137.50	Tappo M18x1.5x10 D.23 - D.12	292
22	99.3175.00	Vite M 8x60 UNI 5931	8
23	44.1002.51 63.1010.51 63.1011.51 66.1007.51 66.1009.51	Anello di testa D. 13 Anello di testa D. 15 Anello di testa D. 18 Anello di testa D. 20 Anello di testa D. 22	282-287 283-288 284-289 285-290 286-291
24	90.2602.00 90.2611.00 90.2653.50 90.2691.00 90.2716.00	An. ten.alt.D.13x21x4 HP An. ten.alt.D.15x24x5.4/3.4 HP An. ten.alt.D.18x28x4/3.7 HP An. ten.alt.D.20x30x6/3.7 HP An. ten.alt.D.22x32x6/3.7 HP	282-287 283-288 284-289 285-290 286-291
25	90.5076.00 90.5089.90 90.5111.50 90.5134.00 90.5148.50	Anello antiest. D. 13x21x4 Anello antiest. D. 15x24x2 Anello antiest. D. 18x28x2 Anello antiest. D. 20x30x2 Anello antiest. D. 22x32x2	282-287 283-288 284-289 285-290 286-291
26	59.6058.01 59.6059.01 59.6060.01 59.6061.01 59.6062.01	Gr. supp. guarn./bussola D. 13 Gr. supp. guarn./bussola D. 15 Gr. supp. guarn./bussola D. 18 Gr. supp. guarn./bussola D. 20 Gr. supp. guarn./bussola D. 22	287 288 289 290 291
27	90.3612.00	OR D. 31.47x1.78 NBR 70 SH. 2125 282-283-284-285-286-287-288-289-290-291	3
29	90.2601.00 90.2608.00 90.2650.00 90.2690.00 90.2715.00	An. ten. alt. D.13x20x5.0 LP An. ten. alt. D.15x22x5.0 LP An. ten. alt. D.18x24x5.0 LP An. ten. alt. D.20x28x6.5 LP An. ten. alt. D.22x30x6.5 LP	282-287 283-288 284-289 285-290 286-291

POS	COD.	DESCRIZIONE - DESCRIPTION - KIT	NR
30	59.2105.70 59.2106.70 59.2107.70 59.2108.70 59.2109.70	Anello per tenuta D. 13 Anello per tenuta D. 15 Anello per tenuta D. 18 Anello per tenuta D. 20 Anello per tenuta D. 22	287 288 289 290 291
31	98.2099.00	Tappo G 3/8"x13	1
32	96.7380.00	Rosetta D. 17.5x23.0x1.5	1
33	98.2179.00	Tappo G 1/2"x10	1
34	96.7514.00	Rosetta D. 21.5x27.0x1.5	1
35	96.6990.00	Rosetta D. 7.5x23.0x0.5	3
36	59.2110.82	Guarnizione spugna D. 3x103	1
37	59.0100.22	Carter pompa	1
38	58.2104.51	Protezione	1
39	90.1565.50	Anello rad. D. 15.0x24.0x5.0/7.0	271
40	59.0500.66	Guida pistone	3
41	97.7399.00	Spinotto D. 14x34	3
42	59.0300.01	Biella completa	3
43	99.3099.00	Vite serraggio biella	6
44	47.1512.22	Coperchio laterale lato spia	1
45	90.3877.00	OR D. 39.34x2.62 NBR 70 SH. 3156	1
46	70.2118.01	Spia livello olio	1
47	59.0201.35 59.0202.35 59.0203.35	Alb. ecc. C.13 - E3A2115 E3B2121 E3C2521 E3E2815 Alb. ecc. C.12 - E3A2113 E3B2118 E3B2515 E3C2518 E3E2520 Alb. ecc. C.10 - E3B2511 E3B2513 E3C2513 E3C2515 E3E2813 E3E2517	1
48	90.0756.00	Anello d'arresto Z145	1

**E3A2113 - E3A2115 - E3B2511 - E3B2513  
 E3B2515 - E3B2118 - E3B2121 - E3C2513  
 E3C2515 - E3C2518 - E3C2521 - E3E2813  
 E3E2815 - E3E2517 - E3E2520**

D. 13	D. 15	D. 18	D. 20
E3E2813 E3E2815	E3E2517 E3E2520	E3B2511 E3C2513	E3B2513 - E3B2515 - E3C2515 E3C2518 - E3C2521
<b>D. 22</b>			
E3A2113 - E3A2115 - E3B2118 - E3B2121			

POS	COD.	DESCRIZIONE - DESCRIPTION - KIT	NR
49	99.3039.00	Vite M 8x16 UNI 5931	12
50	91.8375.00	Cuscinetto a rulli	2
51	90.3913.00	OR D. 67.95x2.62 NBR 70 SH. 3628	2
52	97.5680.00 97.5978.00	Spessore D. 74.5x104x0.3 Spessore D. 74.5x104x0.1	1
53	98.2105.00	Asta livello olio G 3/8"x51	1
54	90.3922.00	OR D. 133.02x2.62 NBR 70 SH. 3525	1
55	59.1600.22	Coperchio posteriore carter	1
56	98.2042.50	Tappo G 1/4"x9 TE17 - Zinc.	1
57	90.3585.00	OR D. 10.82x1.78 NBR 70 SH. 2043	1
58	47.1510.22	Coperchio laterale lato PTO	1
59	90.1648.00	Anello rad. D. 30.0x55.0x7.0	1
60	91.4892.00	Linguetta 8.0x7.0x35.0	1
61	99.3037.00	Vite M 8x16 UNI 5739	4
62	96.7016.00	Rosetta D. 8.4x14.4x2.2	4
63	50.2000.74	Piedino pompa	2

**KIT RICAMBI - SPARE KITS**

KIT Nr.	KIT 269	KIT 292	KIT 271	PIST. D. 13		PIST. D. 15		PIST. D. 18		PIST. D. 20		PIST. D. 22	
				KIT 282	KIT 287	KIT 283	KIT 288	KIT 284	KIT 289	KIT 285	KIT 290	KIT 286	KIT 291
Posizioni include Positions included	2 - 3 - 4 5 - 6 - 13 14 - 15 - 16 17 - (7) - (18)	8 - 9 20 - 21	39	23 - 24 25 - 26 27 - 29 29	23 - 24 25 - 26 27 - 29 30	23 - 24 25 - 26 27 - 29 29	23 - 24 25 - 26 27 - 29 30	23 - 24 25 - 26 27 - 29 30	23 - 24 25 - 26 27 - 29 29	23 - 24 25 - 26 27 - 29 30	23 - 24 25 - 26 27 - 29 29	23 - 24 25 - 26 27 - 29 30	23 - 24 25 - 26 27 - 29 30
Nr. Pcs.	3	3	3	3	1	3	1	3	1	3	3	1	1

