



INSTRUCTION MANUAL
BETRIEBSANLEITUNG

GB
DE

TECHNICAL DATA / TECHNISCHE DATEN

MODEL / MODELL	Axel foamer 2000	Axel foamer 3000
Product symbol / Produktsymbol	S12103	S12103
Net weight / Nettogewicht	0,64 kg	0,65 kg
Working capacity / Arbeitskapazität	2000 ml	3000 ml
Max. working pressure / Max. Arbeitsdruck	0,4 Mpa (4 bar) (60 psi)	
Pressure protection / Druckschutz	Safety valve	
Type of sealing / Dichtungstyp	EPDM	
Material of the tank / Werkstoff des Behälters	Polyethylene / Polyethylen	

SAFETY SIGNS / SICHERHEITSKENNZEICHEN

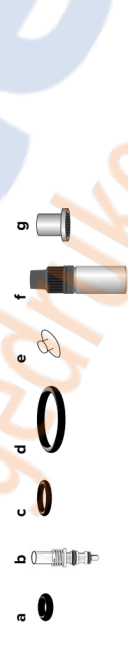
SIGN ZEICHEN	MEANING / BEDEUTUNG	PLACE STELLE
1.	Name plate / Typenschild	On the tank Am Behälter
2.	General warning sign, warning, safety / risk / Allgemeines Warnzeichen, Warnung, Gefahr	On the tank Am Behälter
3.	Read the instruction manual before starting work / Vor Beginn der Arbeit mit dem Sprühgerät lesen Sie diese Betriebsanleitung genau durch.	On the tank Am Behälter
4.	Warning against danger of poisoning by toxic substances / Warnung vor Vergiftung durch toxische Stoffe.	On the tank Am Behälter

EU DECLARATION OF CONFORMITY / EU-KONFORMITÄTSERKLÄRUNG

Marolex declares that the product meets the requirements of the DIRECTIVE 2006/42/EC OF THE EUROPEAN PARLIAMENT AND OF THE COUNCIL of 17 May 2006 on machinery.
Die Firma Marolex erklärt hiermit, dass das Produkt den Anforderungen der Richtlinie des EUROPÄISCHEN PARLAMENTES UND RATES 2006/42/EG vom 17. Mai 2006 über Maschinen entspricht.

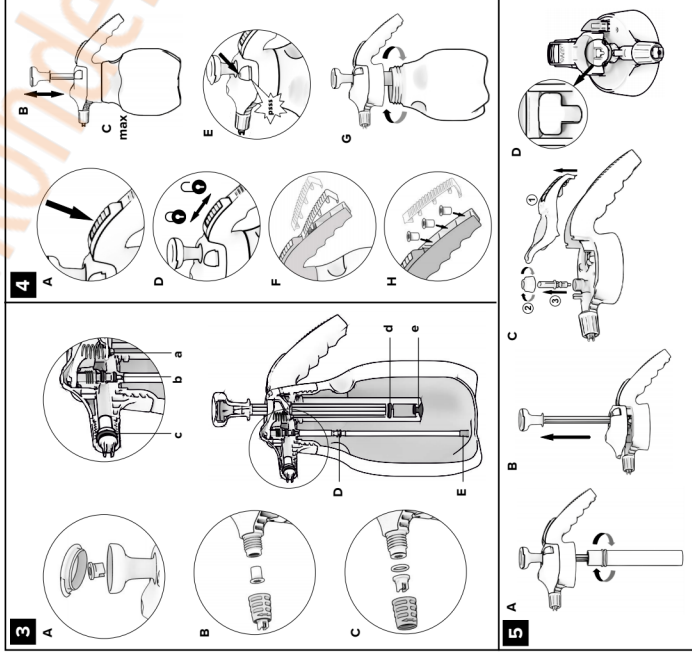
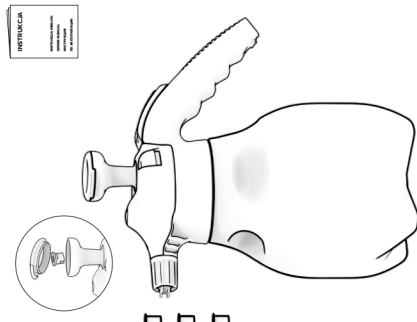


2 REPAIR SET / REPARATURSET A028.103 (Z08eA)



SPRAYER FOR FOAM
MANUELLES
DRUCKSPRÜHGERÄT

1



WARRANTY CARD GARANTIESCHEN	SELLER'S STAMP AND DATE STEMPEL DES HÄNDLERS UND DATUM	DESCRIPTION OF DEFECT FELDBESCHREIBUNG
DATE OF REPAIR REPARATURDATUM		

GB

INSTRUCTION MANUAL

Sprayer for foam
AXEL 2000/3000

1. USE AND INTENDED PURPOSE

The axel sprayer is intended for application of alkaline and neutral foam-making liquids. It is used in chemical industries, workshops, car washes and detailing companies as well as in households.
NOTING! It is forbidden to use hydrochloric acid, sodium hypochlorite, agents containing solvents, oil derivatives, dense and viscous substances and any liquid having a temperature of over 40°C. In case of doubt as to application of any substance or product please contact the technical department: service@marolex.pl.
Note! The axel sprayer is a device intended for application of actively foaming agents and for aeration of surfactants, therefore, it does not perform the function of the sprayer.
Failure to comply with the rules of this instruction manual may result in damage to the sprayer or permanent health impairment.

2. AXEL SPRAYER EQUIPMENT

Complete sprayer Fig. 1. instruction manual with warranty card, set of 3 foaming inserts, additional flat stream nozzle.
Marolex reserves the right to make changes in the axel sprayer equipment.

3. PREPARATION AND AXEL SPRAYER OPERATION

1. Read this instruction manual before starting work with the axel sprayer.
2. The axel sprayer is complete and prepared for work, however, for safety purposes before starting work, check the operation of the safety valve and the tightness of the sprayer with the use of clean water. Before unscrewing the head always check whether the tank is not under pressure pressing the button of the safety valve Fig. 4E until the released air sound is not longer audible.
Then, unscrew the head Fig. 4G, pour water, screw the head and, with several movements, pump the sprayer by means of the piston rod Fig. 4B. Check whether the device is tight, and then, press the button of the safety valve Fig. 4E. When the button of the safety valve is pressed the clear sound of air released under pressure is audible which means proper function of the safety valve. After checking, unscrew the head Fig. 4G, making sure that there is no pressure in the tank, pour out water and screw the head.
3. In order to start work with the Axel sprayer, remove pressure from the tank by means of the safety valve Fig. 4E, unscrew the head Fig. 4G, pour the solution prepared earlier according to the recommendations specified on the package of foaming liquid, not exceeding the level indicated on the scale Fig. 4C. Screw the head making liquid, not exceeding the level indicated on the scale Fig. 4C. Screw the head Fig. 4G and pump the sprayer Fig. 4B, until the safety valve is open. After pumping, direct the sprayer towards the place of application and, pressing the button Fig. 4A, start work. The sprayer can work continuously by shifting the lock of the button, for this purpose: press the button and shift the lock of the button forward Fig. 4D in order to release the lock; press the button once again and shift the lock back.
In case of excessive pumping the safety valve opens automatically, at the moment, a slight amount of foam together with air can get out of the valve, this is a normal phenomenon and does not result from damage to the sprayer.
After work: remove pressure from the tank by pressing the button of the safety valve Fig. 4E, rinse also the sprayer with clean water in order to protect the foaming inserts against gluing and loss of flowing. The clogged insert prevents the proper operation of the sprayer.
The set includes an additional flat stream nozzle with a larger angle which can be replaced to apply foam to larger areas. In order to replace it: unscrew the nut with the nozzle, take the nozzle with the o-ring out, then, insert the nozzle and the o-ring and screw the nut Fig. 3C.
The set includes also replacement foaming inserts which make it possible to obtain foam of different density. In order to replace them: unscrew the nut with the nozzle, take the foaming insert out Fig. 3B then, insert the selected foaming insert and screw the nut of the nozzle. The replacement foaming inserts after removal from the box can be safely and comfortably stored in the handle of the head under the cap Fig. 4H. For this purpose: remove the cap Fig. 4F, place the inserts in the handle and put the cap Fig. 4H.
The colours of the inserts correspond with the different foam density: white - watery foam, light blue - normal foam, dark blue - dense foam.

4. NOTES ON WORK SAFETY

1. Children, pregnant women, ill persons taking medication, persons after drinking alcohol and persons using substances limiting concentration are not allowed to work with the sprayer.
2. During the first start-up, check the tightness of the sprayer with the use of clean water.
3. While working with chemical agents (also when preparing preparations and destroying packages), it is necessary to use special protective clothing: rubber footwear, gloves, coat, cap, safety goggles, mask or half-mask.

4. Do not start working with chemical agents on empty stomach; eating, drinking and smoking is forbidden during work. Drinking alcohol the day before work and after work is not allowed as well.
5. Do not remove liquid residues to open waters, sewages or biological wastewater treatment plants. These notes apply also to the liquid used to rinse the tank and other subassemblies of the sprayer.
6. Hand over the worn sprayer to the local chemical waste disposal agency.
7. A person working with a sprayer should absolutely follow the recommendations included in the packages of chemical agents, in case of poisoning contact your doctor.
8. It is unacceptable to work with an inoperative sprayer, non-functioning safety valve or any lack of tightness. After pumping the tank must not be exposed to hitting.
9. All service activities should be carried out after decompression of sprayer.
10. Wash the sprayer carefully after each use, rinsing it with water several times and before any service activities.
11. The use of the sprayer for purposes other than specified in the instruction manual is forbidden.
12. It is not allowed to store the sprayer filled with liquid and under pressure.
13. The pump located in the tank is the only device used to generate the pressure during work. It is forbidden to use any other device for this purpose!
14. It is not allowed to use liquids having a temperature of over 40°C, flammable or explosive substances, e.g. petrol, solvents etc.
15. Unauthorised modifications introduced to the sprayer and its use against the intended purpose can result in poisoning of people and animals, environmental pollution, damage to the sprayer or serious accidents.
16. After work: change the clothes (clean the protective clothing), wash the hands, face, rinse the mouth and throat, clean the nose.
17. The user is only responsible for damages resulting from the failure to follow the rules included in this instruction manual.
18. It is not allowed to modify, to lock the safety valve as this can cause damage to the sprayer that can result in permanent health impairment.
19. Before work, always check the function of the safety valve. For this purpose: pump the sprayer and by pressing the button Fig. 4E. The sound of air released under pressure should be audible when the holder of the valve is lifted up.
20. It is not allowed to direct the lance of the sprayer and to spray the liquid towards the face.
21. When the sprayer is used or stored, protect it against access of unauthorised persons, including, in particular, children.
22. In case other substances are used, make sure that they can be used in the sprayer and that they are not harmful to the sprayer, people and environment.

5. WARRANTY CONDITIONS AND REPAIRS

1. The warranty period is 60 months for the tank and 24 months for the other elements of the sprayer. The warranty period starts from the date of purchase.
2. A defective part or the sprayer reported for warranty repair should be delivered to the point of sale or sent to Marolex. In case a part or subassembly is damaged please send only this damaged part or subassembly.
3. **Sprayers, dirty or contaminated with chemical agents, delivered under complaint, will not be repaired. They should earlier carefully emptied, rinsed and cleaned!**
4. The repairs are performed upon presentation of a valid warranty card or proof of purchase. The guarantor ensure good quality and efficient function of the product when used as intended, under operating conditions specified in the instruction manual.
5. The repairs on user's own should be performed only with the use of Marolex original parts.
6. When the defect of the good is detected during the warranty period, the guarantor is obliged to repair the defect free of charge within 14 working days.
7. The number of repairs after performance of which the seller cannot refuse to replace the good with the new one (if there are still defects in it) is 3.
8. The activities mentioned in the instruction manual as the activities belonging to the normal operational service by the holder of the warranty are not considered as warranty repair.
9. The manufacturer will refuse to honour a warranty claim if the pressure adjustment is changed, the sprayer is improperly stored or used.
10. The company is not responsible for mechanical damage caused by the user.
11. Please perform warranty repairs in an authorised service point or directly at Marolex.
12. The warranty for the sold consumer good shall not exclude, limit or suspend the buyer's rights resulting from the lack of conformity of the good with the contract.

6. AXEL SPRAYER STORAGE AND MAINTENANCE

1. The axel sprayer should be stored not in sunlight, at a temperature of over +4°C.
2. Do not store the sprayer with the pressed button of the lock Fig. 4D, this can result in the malfunction of the sprayer.
3. **After work: disassemble the sprayer, thoroughly wash and submit it to maintenance (necessarily thoroughly rinse the foaming insert).**
4. In order to perform maintenance: check whether the sprayer is not under pressure by the button Fig. 4E, then, unscrew the nut with the nozzle, take the foaming insert out Fig. 3B and rinse with water. Unscrew the head Fig. 4G, unscrew and pull the cylinder of the pump out Fig. 5A, remove the cover of the head Fig. 5B, remove the button, unscrew the nut and pull the stem out Fig. 5C, lubricate the following elements with silicone grease Fig. 2F: o-ring Fig. 3d and o-rings on the stem Fig. 3b, check the cleanliness of the mushroom Fig. 3e, if need be, rinse it with water.
5. After completion of the mentioned operations: assemble the sprayer according to the following instructions: insert the stem, screw the nut Fig. 5C and install the button Fig. 5D, put the cover of the head Fig. 5B, insert and screw the cylinder of the pump Fig. 5A, screw the head Fig. 4G, place the foaming insert in the head and screw the nut with the nozzle Fig. 3B.