

COLD-WATER CLEANERS

92/9300 Series

THE PROFESSIONAL CLEANERS FOR THE DEMANDING TASKS

Supplied with:

- 10 meter **2-layer** high pressure hose
- Pistol grip handle
- **Stainless** steel double lance with high and low pressure nozzles
- 10 meter power cable with plug



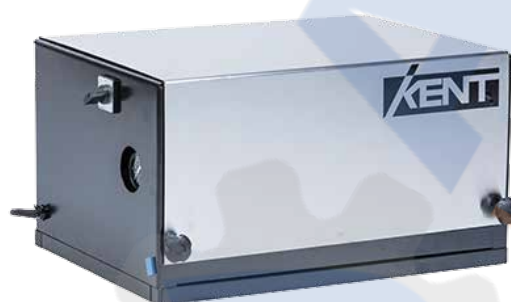
MODEL	WORKING PRESSURE/BAR	WATER USAGE L/MIN.	PUMP PISTONS	ENGINE CAPACITY - KW/HP	VOLTAGE	LENGTH MM.	WIDTH MM.	HEIGHT MM.	NOZZLE	WEIGHT KG
9215	270	15	3	7.5/10	3x230/400	700	580	500	1504	98
9221	200	21	3	7.5/10	3x230/400	750	580	500	15065	98
9225	170	25	3	7.5/10	3x230/400	750	580	500	1508	98
9230	150	30	3	7.5/10	3x230/400	750	580	500	1510	98
9318	350	18	3	11/15	3x230/400	750	580	500	15045	98
9330	200	30	3	11/15	3x230/400	750	580	500	1509	98
9342	150	42	3	11/15	3x230/400	750	580	500	1515	98
9350	120	50	3	11/15	3x230/400	750	580	500	1518	98

Supplied with:

- 10 meter **2-layer** high pressure hose
- Pistol grip handle
- **Stainless** steel double lance with high and low pressure nozzles
- 10 meter power cable with plug

Can be delivered with frequency control:

- Work-tasks requiring variable pressure settings
- Stable cleaning of all kinds
- Multi-user cleaning
- Maritime hull cleaning



MODEL	WORKING PRESSURE/BAR	WATER USAGE L/MIN.	PUMP PISTONS	ENGINE CAPACITY - KW/HP	VOLTAGE	LENGTH MM.	WIDTH MM.	HEIGHT MM.	NOZZLE	WEIGHT KG
9215-ST	270	15	3	7.5/10	3x230/400	700	580	500	1504	98
9221-ST	200	21	3	7.5/10	3x230/400	750	580	500	15065	98
9225-ST	170	25	3	7.5/10	3x230/400	750	580	500	1508	98
9230-ST	150	30	3	7.5/10	3x230/400	750	580	500	1510	98
9318-ST	350	18	3	11/15	3x230/400	750	580	500	15045	98
9330-ST	200	30	3	11/15	3x230/400	750	580	500	1509	98
9342-ST	150	42	3	11/15	3x230/400	750	580	500	1515	98
9350-ST	120	50	3	11/15	3x230/400	750	580	500	1518	98