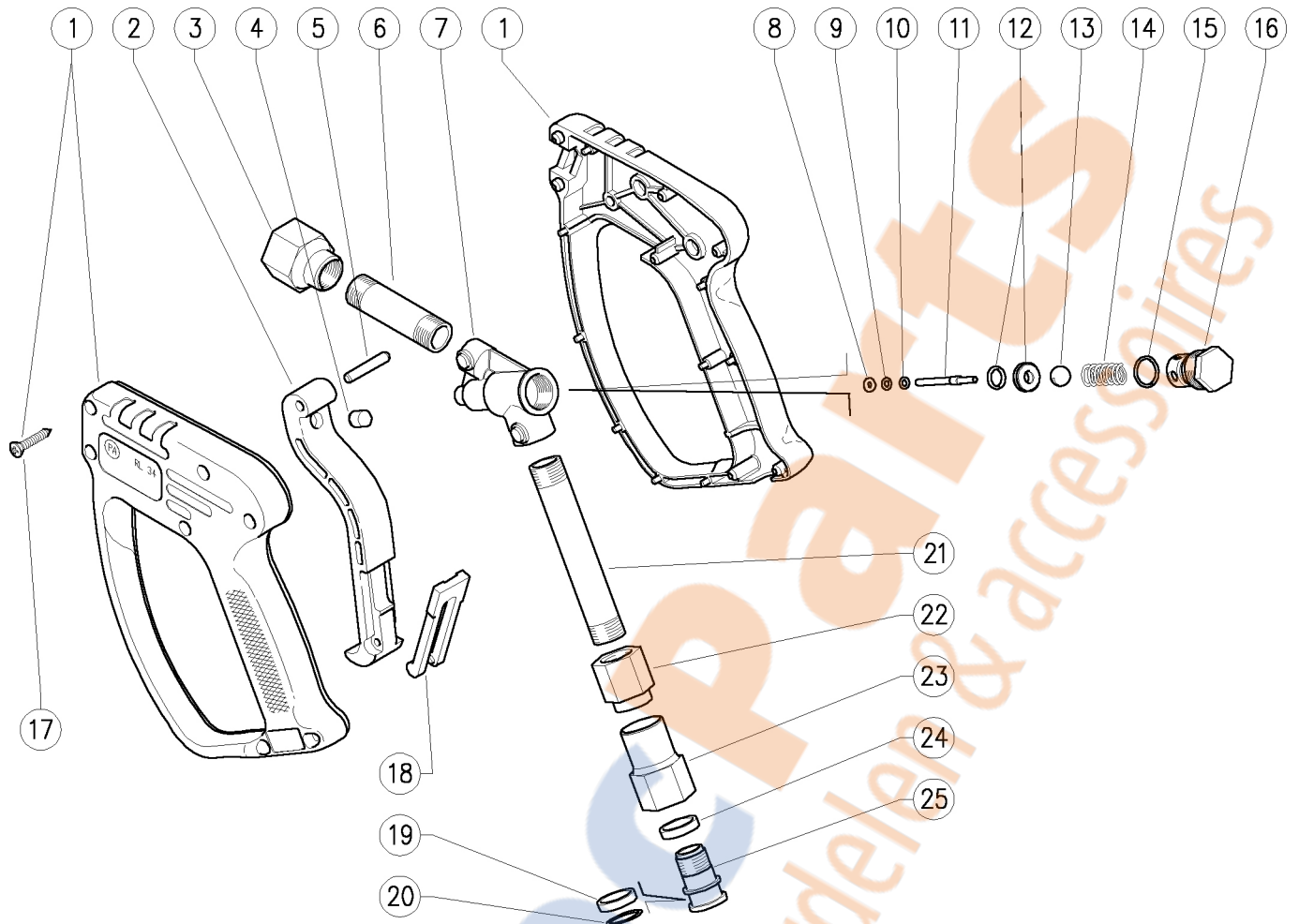


30.2900.00 RL34 brass spr.gun sw5- 1/2F-1/2F Bsp



Pos.	P/N	Description	Q.ty	K1	K2	K3	K4	
1	30.2903.24	Casing-kit -RL34 +screws, Sst.	1					1
2	30.2543.84R	Blue trigger RL34-82	1					2
3	30.3171.31R	Coupl., M16x1F-1/2F Bsp brass	1					5
4	30.0675.84R	Stop pin, 8x7,1mm PA	1					10
5	30.2517.31R	Parallel pin, 5x27,5 mm brass	1					10
6	30.3180.36R	Tube L.57mm M16x1mm brass	1					3
7	30.2901.35R	Brass housing RL34	1					2
8	10.4018.00R	Back-up ring, 3,2x7,5x1,2 mm	1	•				10
9	10.3165.00R	O-ring, 2,62x2,84 mm Vi 70	1	•				10
10	14.3511.00R	Washer, 3,2x7x0,5 mm sst.	1					10
11	30.2802.51R	Sst.plunger D.4x3x L.43mm	1	•				10
12	30.2806.20R	Seat, 9mm Sst.+O-ring	1	•				10
13	14.7461.00R	Ball, 13/32" Sst.	1	•				10

Pos.	P/N	Description	Q.ty	K1	K2	K3	K4	
14	30.4108.51R	Spring, 1,6x8,8x24 mm Sst.	1					10
15	10.3060.10R	O-ring, 1,78x12,42 mm Vi 70	1	•				10
16	30.2803.31R	Spring plug M18 brass	1					5
17	16.3075.51R	S/tapping scr. 3,5x18 mm sst.	7					10
18	30.1510.84R	Safety latch, PA red	1					10
19	26.1075.85R	Bushing, open 15,5x19x4 mm PTFE	1	•	•			10
20	10.3092.10R	O-ring, 2x15 mm Vi 70	1	•	•			10
21	30.3173.36R	Tube L.96mm M16x1 mm brass	1					5
22	30.3181.31R	Coupling M15xM16 Brass	1					3
23	30.3182.31R	Coupling 1/2 F Bsp, nickel-plated brass	1	•				3
24	26.1074.85R	Bushing, 15,5x19x4 mm PTFE	1	•	•			10
25	26.1072.31R	Pin, M15x1-19 mm brass	1	•				10

Kit	P/N	Description	Q.ty
K1	30.2905.24	Spare kit -RL34, 9(10)x1pcs.	1
K2	30.9024.99R	Kit sw5 1/2 Bsp x RL34 brass w/out M15 nipp.	5