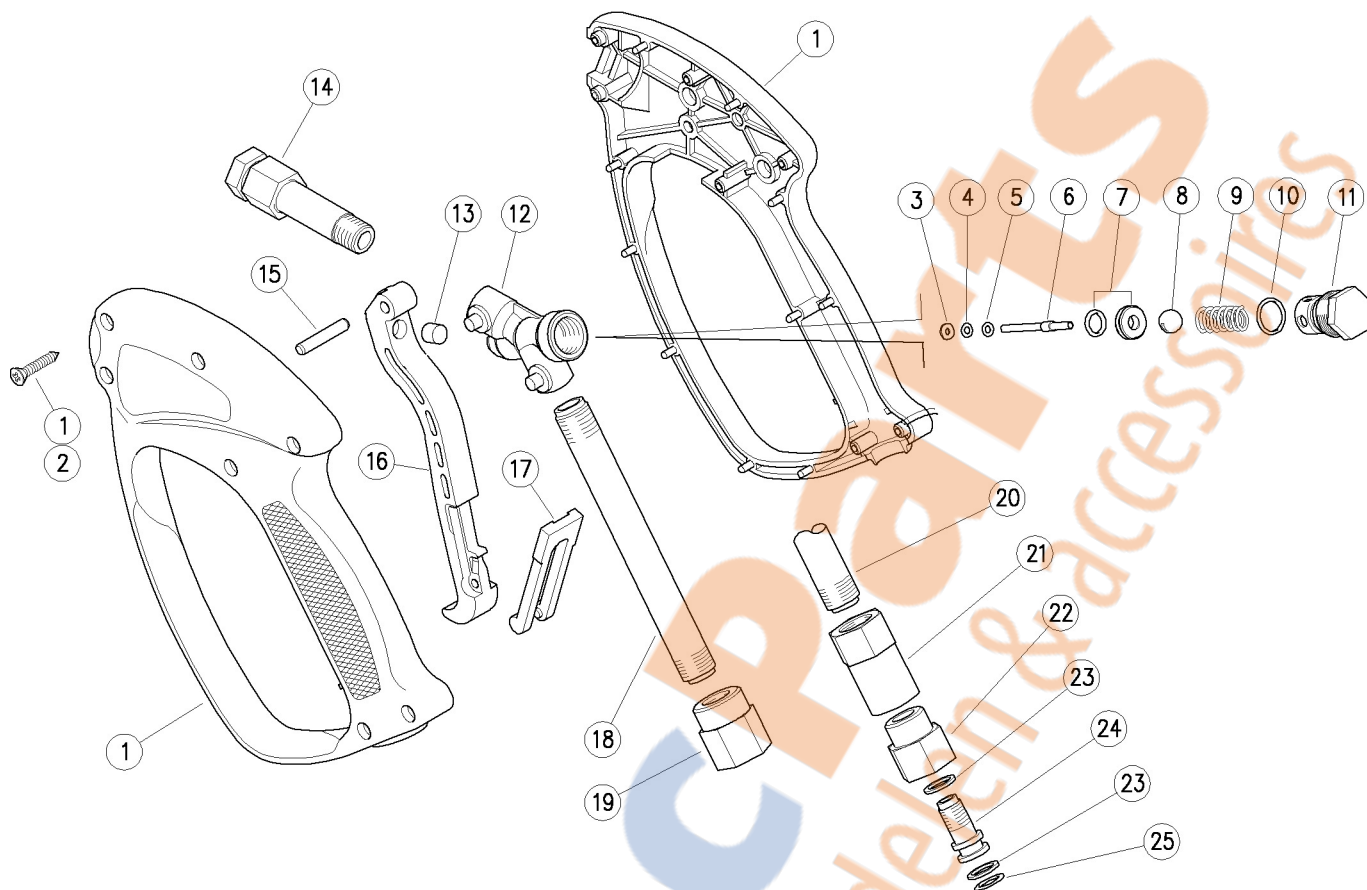


30.1200.00 RL37 spr.gun 3/8F-1/4F Bsp
 30.1200.50 RL37 spr.gun 3/8F-1/4F Npt
 30.1200.80 RL37 gun -3/8-1/4Bsp MF

30.1210.00 RL37 weep gun -3/8-1/4Bsp FF
 30.1215.00 RL37 weep gun+sw6 -Bsp3/8F x 1/4F
 30.1220.00 RL37 spr.gun +sw.6 3/8F-1/4F Bsp



Pos.	P/N	Description	Q.ty	K1	K2	K3	K4
1	30.1207.24	Casing-kit -RL37 +screws, Sst.	1				1
2	16.3077.00	RS/tapping screw, DIN7981 3,5x18 mm	7				10
2	16.3075.51	RS/tapping scr. 3,5x18 mm sst. (1)	7				10
3	10.4018.00	RBack-up ring, 3,2x7,5x1,2 mm	1	•	•		10
4	10.3165.00	RO-ring, 2,62x2,84 mm Vi 70	1	•	•		10
5	14.3511.00	Washer, 3,2x7x0,5 mm sst.	1	•	•		10
6	30.0704.51	Piston, 3-4 mm Sst.	1	•	•		10
7	30.1708.20	Seat, 6mm Sst.+O-ring 1,78mm NBR85	1	•	•		10
7	30.0716.20	Weep.seat,5,8mm+O-ring (I.1,1) (1)	1				10
8	14.7448.00	Ball, 5/16" Sst.	1	•	•		10
9	30.2596.51	RSpring, 1,5x6,1x23 mm Sst.	1				10
10	10.3020.02	RO-ring, 1,5x10 mm Ni 85	1	•	•		10
11	30.2595.31	RSpring plug, M16x1 brass	1				10
12	30.1205.35	Housing -RL37, brass	1				5
13	30.0675.84	Stop pin, 8x7,1mm PA	1				10
14	30.2006.35	Front tube, 1/4F Bsp 72 mm brass	1				5

Pos.	P/N	Description	Q.ty	K1	K2	K3	K4
14	30.2008.35	RFront tube, 1/4F Npt 72 mm brass (2)	1				10
15	30.2517.31	RParallel pin, 5x27,5 mm brass	1				10
16	30.1204.84	RTrigger -RL37, PA black	1				10
17	30.1510.84	RSafety latch, PA red	1				10
17	30.1515.84	RSafety latch, PA blue (1,3)	1				10
18	30.1203.66	RTube, 1/4Bsp MM 140 mm z.pl.	1				5
19	30.1206.31	RCoupl., 1/4F-3/8F Bsp brass (4)	1				5
19	30.1208.31	RCoupl., 1/4F Bsp-3/8F Npt brass (2)	1				5
19	30.1212.31	RAdapter, 1/4F-3/8M Bsp brass (5)	1				5
20	30.1221.66	RTube, 1/4Bsp MM 115 mm z.pl. (6)	1				5
21	30.1222.31	RAdapt., M10x1F-1/4F Bsp brass (6)	1				5
22	30.2019.31	RCoupl., 3/8F Bsp brass (6)	1				5
23	10.4010.01	RBack-up ring,10,2x13,9x1,2mm (6)	2	•			50
24	30.2017.51	RPin, SW M10x1 M Sst. (6)	1				5
25	10.3129.50	RO-ring, 2,5x9,5 mm Vi 70 (6)	1	•			10

Kit	P/N	Description	Q.ty
K1	30.1209.24	Repair kit -RL37, 8x1pcs.	1
K2	30.1224.24	Repair kit -RL37+sw6 10x1pcs.	1

(1) 30.1210.00 (2) 30.1200.50 (3) 30.1215.00 (4) 30.1200.00 (5) 30.1200.80 (6) 30.1220.00