

# AL heavy duty

RAL **3002** **5012** **7040**

## GALVANIZED AND POWDER COATED STRUCTURE / STRUTTURA ZINCATA E VERNICIATA

ø 410 mm  
drum/tamburo

**4R** Optional 4-rollers hose guide  
Guida tubo a 4 rulli opzionale

optional [page 80-83](#)

**INLET HOSE**

**ALCS20**

**ALSG20R**

 II 2G/D  
optional



**4R** - Optional 4-rollers hose guide.  
Ordering the version indicating the hose reel code followed by "4R"  
**4R** - Guida tubo a 4 rulli opzionale.  
Ordinare la versione indicando il codice dell'avvolgitubo seguito da "4R"



**EN** Automatic hose reels suitable for the distribution of fluids at different pressure and temperature conditions. The parts in contact with the fluid have metal details and high-quality gaskets. The hose-guide support can be mounted in two different positions according to the hose reel installation (pos. A-B). Optional: connection hose, revolving stand, 4-rollers hose-guide, fixing bracket.

**FR** Enrouleurs automatiques utilisés pour distribuer des fluides en différentes pressions et températures. Composants en contact avec le fluide constitués de pièces métalliques et de joints de haute qualité. Support guide-tuyau applicable en 2 positions différentes pour permettre l'installation souhaitée (pos.

A-B). En option: tuyau de connexion, support pivotant, guide tuyau 4 rouleaux, contre-étrier de fixation.

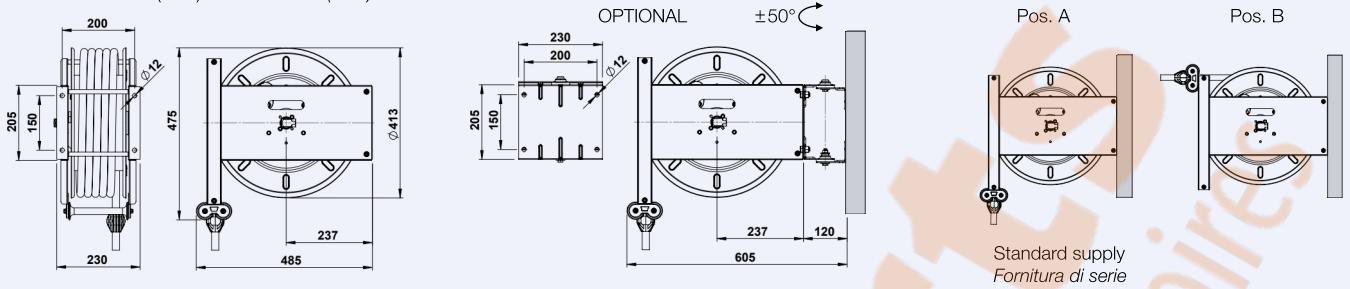
**DE** Schlauchaufroller zur Abgabe von versch. Flüssigkeiten untersch. Betriebstemperaturen und -drücke. Teile mit Kontakt von Flüssigkeiten aus spez. Metallen und Dichtungen hoher Qualität. Wandbefestigung für 2 versch. Positionen (s. Abb. A-B). Optional: Verbindungsschlauch, Schwenkkonsole, Schlauchführung mit 4 Rollen und Wandbefestigung.

**ES** Enrolladores automáticos preparados para distribuir fluidos en diversas condiciones de presión y temperatura. Componentes en

contacto con el fluido constituidos por partes metálicas y guarniciones de alta calidad. Soporte guía manguera aplicable en dos diversas posiciones para permitir la instalación deseada (pos. A-B). Opcional: manguera de conexión, soporte giratorio, guía manguera de 4 rodillos, sujeción para fijación.

**IT** Avvolgitubo automatici adatti per distribuire fluidi a diverse pressioni e temperature. Parti a contatto con il fluido costituite da particolari metallici e guarnizioni di elevata qualità. Supporto guidatubo applicabile in due diverse posizioni per consentire l'installazione desiderata (pos. A-B). Optional: tubo di collegamento, supporto girevole, guidatubo a 4 rulli, controstaffa di fissaggio.

Dimensions (mm) / Dimensioni (mm)



Hose reels model AL without hose / Avvolgitubo modello AL senza tubo

Fluid Fluido	Max. pressure Pressione max.	Code Codice	Inlet (Bsp) Entrata (Gas)	Outlet (Bsp) Uscita (Gas)	Capacity Capacità	Weight (kg) Peso (kg)	ATEX (optional)
Air/Aria Water/Acqua Oil/Olio	60 Bar/840 PSI	AL603820ST	3/8" F	3/8" M	20 m/65 ft	19	•
		AL601220ST	1/2" M	1/2" M	20 m/65 ft	19	•
Air/Aria	18 Bar/250 PSI	AL183825ST	3/8" F	3/8" M	25 m/80 ft	19	•
Grease/Grasso	400 Bar/5600 PSI	AL4G1420ST	1/4" F	1/4" M	20 m/65 ft	19	•
		AL4G3820ST	3/8" F	3/8" M	15 m/50 ft	19	•
Water/Acqua 150°C	400 Bar/5600 PSI	AL4H3820ST	3/8" F	3/8" M	20 m/65 ft	19	•
		*AL4H3820STMX	3/8" F	3/8" M	20 m/65 ft	19	•

\* With stainless steel swivel and shaft / Con giunto e mozzo in acciaio inox

Hose reels model AL with hose / Avvolgitubo modello AL completi di tubo

Fluid Fluido	Pressure - Hose Pressione - Tubo	Code Codice	Inlet (Bsp) Entrata (Gas)	Outlet (Bsp) Uscita (Gas)	Hose diam. Tubo diam.	Hose length Lungh. Tubo	Weight (kg) Peso (kg)	Inlet hose Tubo entrata (optional)	ATEX (optional)
Air/Aria Water/Acqua	18 Bar/250 PSI Rubber/Gomma	AL181020	3/8" F	3/8" M	10 x 17	20 m/65 ft	24	TC10005	
		□AL181025	3/8" F	3/8" M	10 x 17	25 m/80 ft	25	TC10005	•
		AL181315	1/2" M	1/2" M	13 x 20	15 m/50 ft	25	TC13005	
		AL181320	1/2" M	1/2" M	13 x 20	20 m/65 ft	26	TC13005	•
		AL181610	1/2" M	1/2" M	16 x 23	10 m/32 ft	24	TC16005	
Air/Aria	20 Bar/280 PSI Polyurethane/Poliuretano	AL201320PU	1/2" M	1/2" M	13 x 18	20 m/65 ft	24	TC13005PU	
		AL201325PU	1/2" M	1/2" M	13 x 18	25 m/80 ft	24	TC13005PU	
Oil/Olio	60 Bar/840 PSI 1SC Rubber/Gomma	AL603820	3/8" F	3/8" M	3/8"	20 m/65 ft	27	TC38005	
		AL601220	1/2" M	1/2" M	1/2"	20 m/65 ft	27	TC12005	•
Grease/Grasso	400 Bar/5600 PSI 2SN/2SC Rubber/Gomma	AL4G1420	1/4" F	1/4" M	1/4"	20 m/65 ft	27	TC14005	
		AL4G3815	3/8" F	3/8" F	3/8"	15 m/50 ft	26	TC38005G	•
Water Acqua 150°C	250 Bar/3500 PSI 1SC Hydro blue 400 Bar/5600 PSI 2SC Hydro blue	AL2H3820	3/8" F	3/8" M	3/8"	20 m/65 ft	27	TC38005H	
		AL4H3820	3/8" F	3/8" M	3/8"	20 m/65 ft	28	TC38005H	•
		AL4H5120	3/8" F	3/8" M	5/16"	20 m/65 ft	27	TC38005H	

□ Only for Air / Solo per Aria