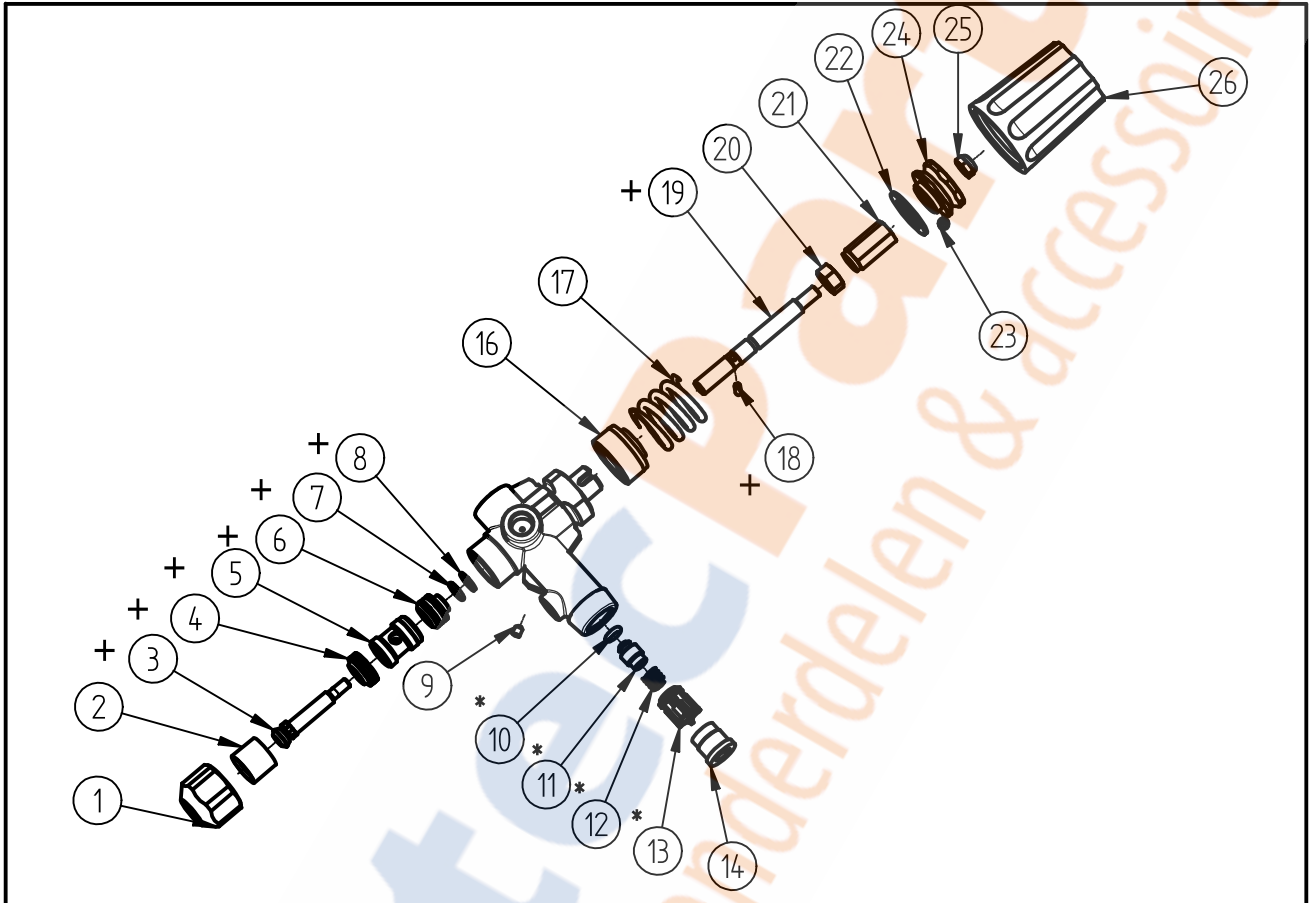


Spare Parts
Unloader ST - 261
Item-No. 20 0261 500



| Pos. | Item-No. | Description | Pos. | Item-No. | Description |
|------|-------------|-----------------------------|------|-------------|------------------------|
| 1 | 01 0001 690 | Cap nut | 16 | 02 0002 850 | Bushing |
| 2 | 01 0001 790 | Distance bushing | 17 | 06 0000 301 | Spring |
| 3 | 20 0260 520 | Section assembly close road | 18 | 04 0001 490 | Cylinder pin |
| 4 | 20 0261 524 | Section assembly seat | 19 | 04 0000 406 | Pull rod |
| 5 | 01 0004 250 | Restrictions part | 20 | 04 0001 610 | Hex nut M8x1 |
| 6 | 20 0261 529 | Section assembly piston | 21 | 01 0004 480 | Adjusting nut |
| 7 | 05 0001 350 | O-Ring 7,65x1,78 | 22 | 02 0001 341 | Glide ring |
| 8 | 05 0000 390 | Back ring | 23 | 04 0001 630 | Hex. socket head screw |
| 9 | 04 0001 270 | Hex. socket head screw M4x5 | 24 | 10 0001 700 | Adjusting nut |
| 10 | 05 0000 051 | O-Ring 5x2,5 | 25 | 04 0001 621 | Nut M6 |
| 11 | 04 0000 440 | Valve part | 26 | 20 0260 547 | Hand wheel complete |
| 12 | 06 0000 310 | Spring | | | |
| 13 | 02 0001 290 | Valve cage | | | |
| 14 | 01 0001 700 | protection screw | | | |

Repair-Kits

| Pos. | Item-No. | Description | Pos. | Item-No. | Description |
|------|-------------|-----------------|------|-------------|--------------------|
| * | 20 0261 528 | Repair- Kit "A" | + | 20 0261 526 | Repair- Kit ST-261 |