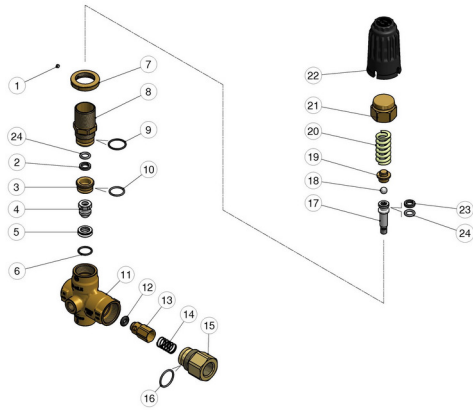


60.1820.00 VB-HT 33-280 unload. 1/2F Bsp brass



60.1820.50 VB-HT 33-280 unload. 1/2F Npt brass

Pos.	P/N	Description	Q.ty	K1	K2	K3	K4	
1	16.2100.00R	Set screw, DIN914 M4x4 mm	1					10
2	10.4010.75R	Back-up ring, 10x14,6x3.0 mm	1	•				10
3	60.1822.31R	Spacer ring, x HT brass	1					3
4	60.1808.51R	Shutter pin, M8 Sst.	1	•				3
5	60.1809.51R	Seat, 11,6x19x6 mm Sst.	1	•				5
6	10.3066.01R	O-ring, 1,78x15,6 mm Ni 85	1	•				10
7	60.1728.31R	Ring nut, M27x1 brass	1					10
8	60.1823.31R	Piston holder, x HT brass	1					3
9	10.3072.01R	O-ring, 1,78x20,35 mm Ni 85	1	•				10
10	10.3068.01R	O-ring, 1,78x17,17 mm Ni 85	1	•				10
11	60.1855.35R	Brass VB33 body -1/2 Bsp F	1					3
11	60.1851.35R	Brass VB33 body (1)	1					3
12	10.3292.85R	O-ring, 4x8 mm x HT	1	•				5
13	60.0488.31R	Shutter pin, brass	1					5
14	60.0489.51R	Spring, 0,8x13,3x27 mm Sst.	1					5
15	60.2809.31R	Shutter coupl., 1/2F Bsp brass	1					3
15	60.1852.31R	Shutter coupl., 1/2F Npt brass (1)	1					3
16	10.3072.60R	O-ring, 1,78x21,95 mm Ni 85	1	•				10
17	60.1821.51R	Sst. Piston, M8 x HT.	1					3
18	14.7443.10R	Ball, 11/32" Sst.	1					10
19	60.1813.31R	Spring rest pin, brass	1					5
20	60.0975.61R	Spring, 4,2x19,7x42 mm z.pl.	1					10
21	60.1727.31R	Valve regulating knob, brass	1					5
22	60.1726.84R	Valve regulating knob, PA black	1					10
23	10.4008.75R	Back-up ring, 9,4x14 x3,0 mm	1	•				10
24	10.3171.75R	O-ring, 2,62 x 9,19 mm Nbr 85 x HT	2	•				5

Kit	P/N	Description	
K1	60.1824.24	Spares kit -VB 33 HT, 10 x1pcs.	1

(1) 60.1820.50

