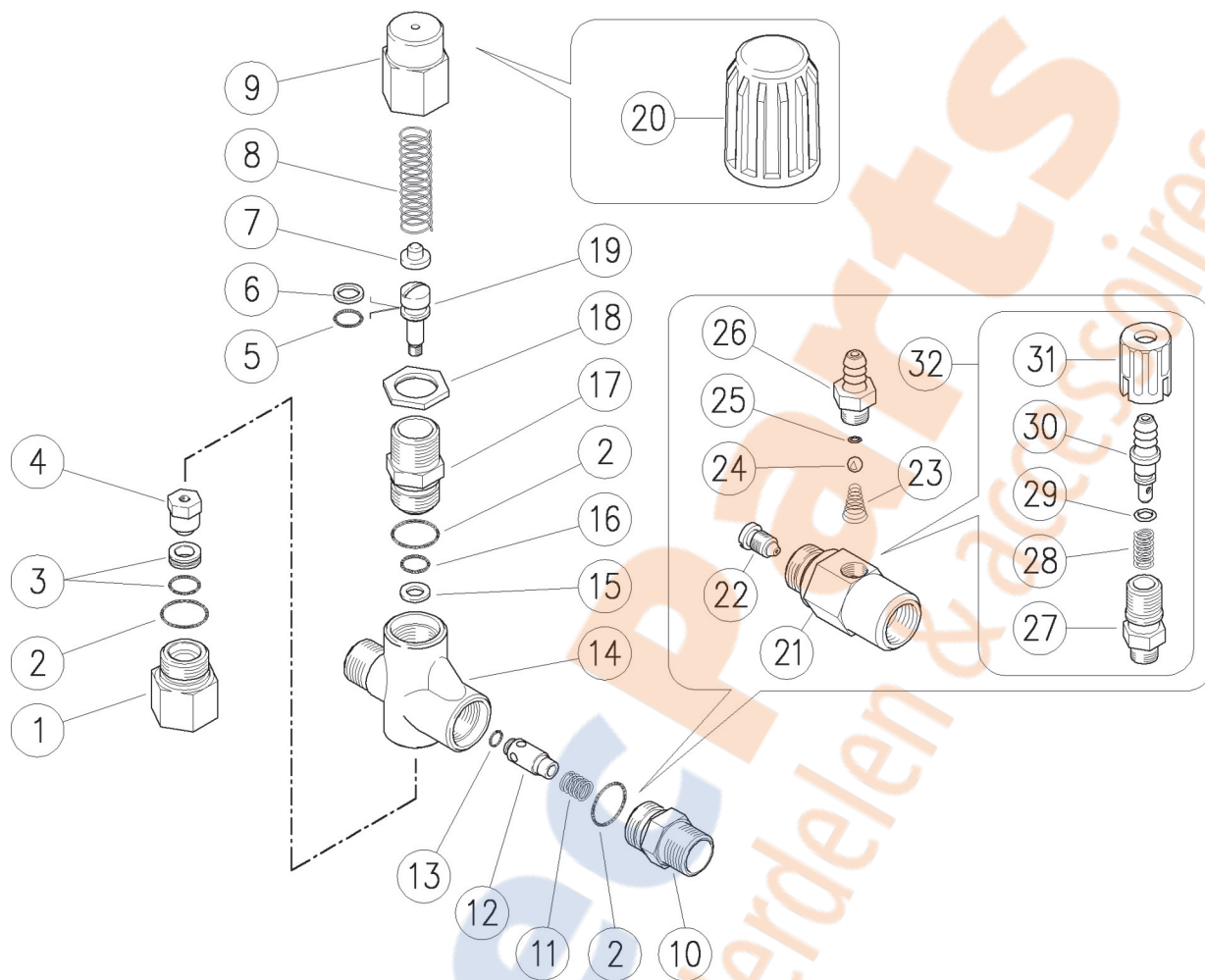


60.0300.00 VB130 unload. 3/8MM Bsp, byp:3/8F  
 60.0300.05 VB 130 unload. 3/8M Npt, byp:3/8F  
 60.0300.50 VB130-8MPa valve 3/8Bsp M z.pl. spring

60.0300.55 VB130-8MPa valve 3/8 Npt M z.pl. spring  
 60.0320.21 VB130 valv. 3/8Bsp MM +2,1mm adjust.inj.  
 60.0321.18 VB 130 unld.3/8M Bsp, bp:3/8F+fix.inj, 1,8



Pos.	P/N	Description	Q.ty	K1	K2	K3	K4		Pos.	P/N	Description	Q.ty	K1	K2	K3	K4	
1	60.0306.31R	Bypass coupl., 3/8F Bsp brass	1					10	16	10.3051.01R	O-ring, 1,78x6,07 mm	1	•	•			10
1	60.0327.31R	Seat coupl., 3/8F Npt brass (1,2)	1					10	17	60.0303.31R	Piston holder, brass	1					10
2	10.3066.00R	O-ring, 1,78x15,6 mm	3	•	•			10	18	60.0317.31R	Locknut, M18x1 brass	1					10
3	60.0314.20R	Seat, 7mm + O-ring, 1mm NBR85	1	•	•			10	19	60.0331.99R	Piston, M5 Sst.+or+p/back	1	•	•			10
4	60.0333.21R	Rest, M5 brass + ball, 11/32" Sst.	1	•	•			5	20	60.0315.84R	Knob VB 7 / 130,plast, hexag.22 **	1					10
5	10.3055.00R	O-ring, 1,78x7,66 mm	1	•	•			10	21	21.0211.31R	Inject.housing, M18x1-3/8MM Bsp brass (4)	1					2
6	10.4008.00R	Back-up ring, opn. 8x11x1,2 mm	1	•	•			10	21	21.0231.31R	Inject.housing, M18x1M-M22x1,5M brass	1					2
7	60.0310.61R	Spring guide, z.pl.	1					10	22	21.0212.51R	Nozzle, M8x1 - 2,1 mm Sst. (5)	1					10
7	60.0310.51R	Spring seat, Sst.**	1					10	22	21.0213.51R	Nozzle, M8x1 - 2,1 mm Sst.	1					10
8	60.0313.61R	Spring, 3x12,3x41 mm	1					10	23	21.0160.51R	Tapered spring, Sst. -inject.	1					10
8	60.0323.61R	Spring, 2,5x12x41 mm white (3,2)	1					10	24	14.7420.01R	Ball, 7/32" Sst. Aisi 316	1					10
9	60.0304.31R	Valve regulating knob, brass	1					5	25	10.3049.00R	O-ring, 1,78x5,28 mm Vi 70	1					10
10	60.0305.31R	Delivery coupl., 3/8M Bsp c/sunk, brass	1					10	26	21.0003.31R	Hose barb, 8 - M12x1 mm brass (5)	1					10
10	60.0326.31R	Delivery coupl., 3/8M Npt brass (1,2)	1					10	27	21.0173.31R	Coupling, M12x1-1/4M Bsp brass	1					10
11	60.0312.51R	Spring, 0,6x8,4x11 mm Sst.	1					10	28	21.0158.51R	Spring, 0,8x7x15 mm Sst.	1					10
12	60.0308.99R	Shutter pin, brass+or 2,5x4 mm	1					10	29	10.3043.01R	O-ring, 1,78x4,48 mm Vi 70	1					10
13	10.3125.00R	O-ring, 2,5x4 mm	1	•	•			10	30	21.0155.99R	Hose barb, d.8 mm brass+o-ring	1					5
14	60.0301.35R	Valve housing, -3/8M Bsp brass	1					5	31	21.0171.84R	Inject.knob, 1/4F Bsp black	1					10
14	60.0325.35R	Housing -VB130, 3/8M Npt brass (1,2)	1					1	32	21.0100.00R	Regul.+h.barb 8-M12mm brs. inje. (4)	1					50
15	10.4006.00R	Back-up ring, 8,6x6x1,2 mm	1	•	•			10									

\*\* On request

Kit	P/N	Description	
K1	60.0398.24	Spares kit -VB130, 10x1pcs.	1
K2	60.0334.24	Spares kit -VB130, 10x5pcs.	1

(1) 60.0300.05 (2) 60.0300.55 (3) 60.0300.50 (4) 60.0320.21 (5) 60.0321.18