


P.A. – S.p.A. – EQUIPAGGIAMENTI TECNICI DEL LAVAGGIO

VIA MILANO, 13 – CASELLA POSTALE 115 – 42048 RUBIERA (REGGIO EMILIA) – ITALY
 Tel. +39 0522 623611 – Fax. +39 0522 629600 – R.E.A. RE 156319 – R.I. RE11535 – Mecc. RE 013446
 C.F. e P. IVA 01035950359 – Cap. Soc. i.v. € 750.000,00 – Codice Identificativo C.E.E. IT 01035950359
 ART. 2497 – BIS C.C. DIREZIONE E COORDINAMENTO BENETTI srl R.I. TRIB. DI RE 01480690351
 Web: <http://www.pa-etl.it> – E-mail: info@pa-etl.it



VB 16 - Unloader Valve (discharging)

Technical manual: E 234

Pressure regulating unloader valve with discharge control pressure with very low readings.
 At gun-lance closure, the water flow is bypassed at reduced pressure

DN 15


- **60.8000.00** VB 16

G1/2 FF

- Sturdy steel and brass construction.
- By-pass control actuated at very low pressure values with reduced pressure in the delivery line when gun is shut.
- Quick start at gun opening assures gradual pressure reset, essential for use on endothermic engines.
- Specially designed check valve prevents jamming and vibrations even in presence of sand and scales
- Working typology protected by registered patent.

Technical specifications

Max. flow rate: 80 l/min. Max temperature: 90°C (1)

Part number	Rated pressure	Permissible pressure	Minimum adjustable pressure	Pressure remainder at circuit closure			(2) Pressure drop to reset bypass			Inlet outlet bypass	Weight
	bar - MPa			bar - MPa	bar - MPa	bar	MPa	bar	MPa		
60.8000.00	500 -50	560 -56	100 - 10	140 (14)	165 (16.5)	190 (19)	65 (6.5)	90 (9)	110 (11)	G1/2 FF	3450

(1) The valve has been designed for a continuous use at a water temperature of 60°C. It can resist for short periods at a maximum temperature of 90°C.

(2) This is the pressure reduction necessary in comparison to the set up, in order that the valve brings back pressure in the circuit.

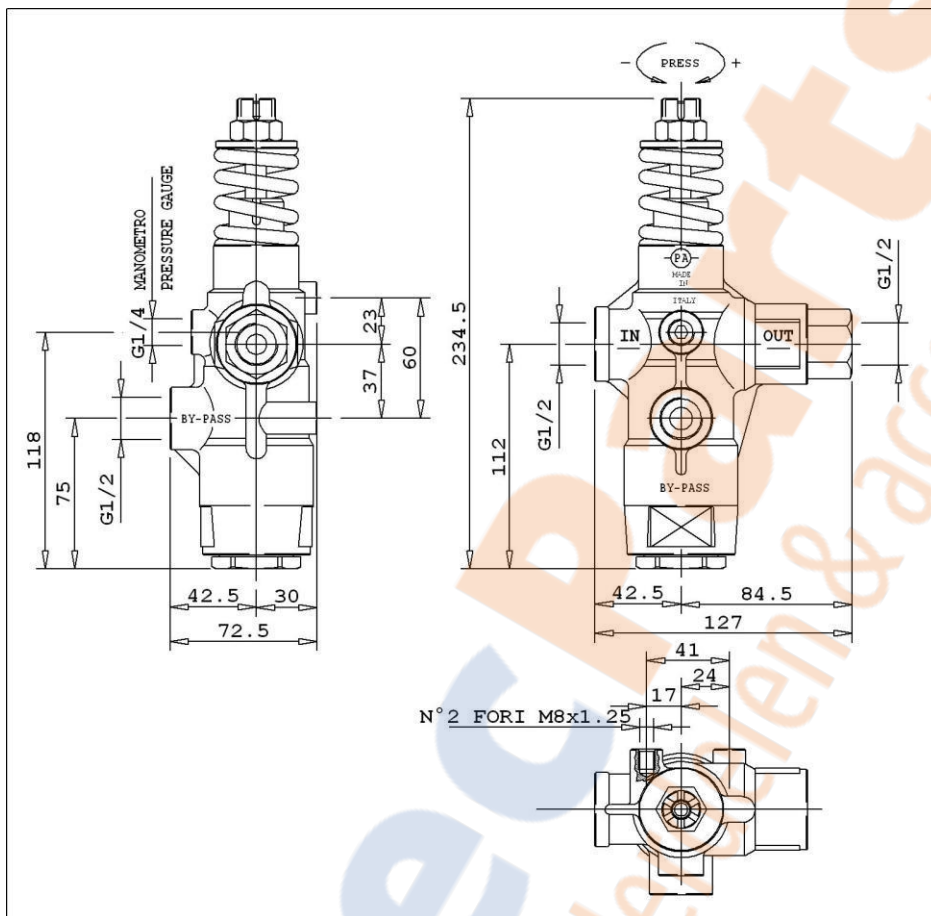
Instruction manual, maintenance, installation, spare parts.

For a correct utilization, follow the directions of this manual

Re-print them on the Use and Maintenance booklet of the machine.

n. 12.9234.00

DIMENSIONAL DRAWING



INSTRUCTIONS

SELECTION

This product is to be utilized with clean fresh water, even slightly additivated with normal detergents. For use involving different or corrosive liquids, contact the PA Technical department. Appropriate filtration should be installed when using unclean liquids. Choose the valve in line with the data of nominal running (system rated pressure, max flow and max temperature). In any case, the pressure of the machine should not exceed the permissible pressure rate imprinted on the valve.

INSTALLATION

This accessory, on a system that produces hot water, **must be fitted upstream the heat generator**. This product is bound to be incorporated on a finished machine. On a system that generates hot water, anticipate the fitting of accessories that limit the accidental increase of fluid temperature.

Always install a safety valve that protects the pressurized inlet channel.

Choose a correct nozzle size, which allows a regular discharge on bypass, at least 5% of the total flow of the system in order to achieve a constant pressure value and avoid troublesome pressure spikes at closure. If the nozzle wears out, the pressure drops. On installation of a new nozzle, re-adjust the system to the original pressure setting.

OPERATIONS

The valve regulates the the max pressure of the system through a piston, which acts on a ball correctly positioned, that closes the bypass opening. A check valve cuts out the delivery section, the pressure of which controls the drive of the piston. Each regulation should be made when the system is operational and the nozzle open.

ATTENTION: In order not to overstep the max pressure, the nut (pos 36) must be fastened and never removed otherwise a mechanical safety feature would lack that limits the max pressure avoiding serious damage to persons and machine. Mark the position with a drop of paint in order to prevent possible slackening and tampering.

The balanced conformation of the valve allows a renewed pressure at very low readings giving a longer function in bypass and a progressive restart, without unpleasant pressure spikes, useful with endothermic engines.

DISCHARGE SYSTEM AND WATER ADDUCTION

The bypass line should be returned into a tank with deflectors. By using a direct pump recycle, with elevated pressure intake, it is necessary to install a pressure reducer in order to have an even flow supply and to protect the circuit intake.

When long bypass conditions occur, direct to the pump intake, it is advisable to fit a thermal protector valve (VT3 or VT6) in order to eliminate excessive temperature build up.

SYSTEM (Technical notes)

Due to the high pressure and flow valves used, always install an adequate pressure dampener in order to balance delivery flows. Connection between pump and valve must be made through a flexible hose, at least 1,5m. long, in order to avoid transmission of vibrations to the valve, especially when using endothermic engines. Valve must be properly installed by using the threaded holes on the valve body.

PROBLEMS AND SOLUTIONS

PROBLEMS	PROBABLE CAUSES	SOLUTIONS
Frequent unloader recycles	Damaged seat or cone Leaking connections Restricted bypass	Replace Check and renew Clean or adapt
Unloader does not reach pressure	Unloader not properly sized Piston O rings worn out Material matter between seat and shutter Worn out nozzle Damaged safety valve	Change spring or type of valve Replace Clean the seat Replace Replace
Pressure peaks	There is not a min of 5% of total flow in bypass Excessive flow in bypass Spring totally compressed	Reset Change type of valve or adjust passages Loosen knob and change nozzle
Unloader does not bypass at low pressure	Jammed check valve Check valve O ring worn out Material matter on check valve	Clean or replace Replace Clean

REGULATIONS : ***see norm manual***

For a correct utilization, follow the directions described in this manual and re-print them on the Use and maintenance manual of the machine.

Make sure that you are given **the Original Conformity Declaration** for the accessory chosen. The present manual is valid for all unloader valves named **VB 16**.

MAINTENANCE

Maintenance has to be carried out by **Specialized Technicians**.

STANDARD: every 400 working hours (circa 10,000 cycles), check and lubricate the seals with water resistant grease.

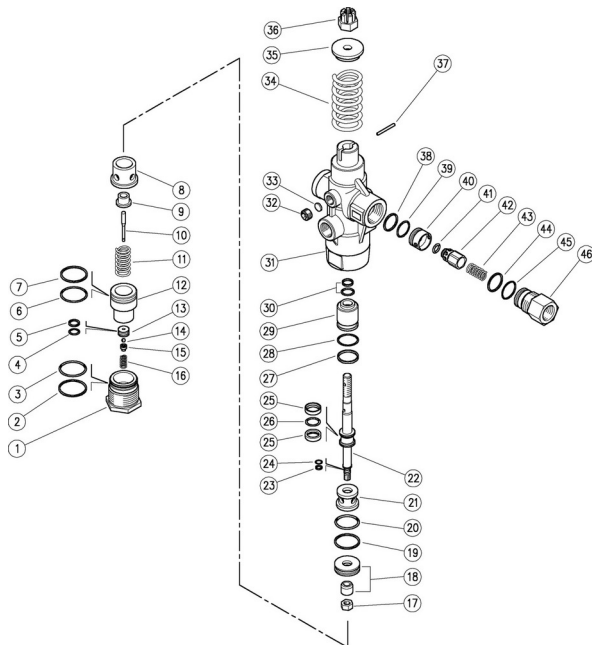
SPECIAL: every 800 working hours (circa 20,000 cycles), control the wear of the seals and internal parts and if necessary, replace with original PA parts taking care during installation and to lubricate with water resistant grease.

ATTENTION: reassemble the valve in the correct manner paying special attention to the Nut (pos 31) which must always be in place.

The manufacturer is not to be considered responsible for damage as a result from incorrect fitting and maintenance

Technical data, descriptions and illustrations are indicative and liable to modification without notice.

60.8000.00 VB16 unload. 1/2F Bsp



Pos.	P/N	Description	Q.ty	K1	K2	K3	K4	
1	60.8003.31R	Plug, M38x1 brass	1					3
2	10.4089.00R	Back-up ring, 32,7x35,5x1,5 mm	1	•				5
3	10.3078.08R	O-ring, 1,78x31,45 mm Ni 85	1	•				10
4	10.3058.02R	O-ring, 1,78x10,82 mm Ni 85	1	•				10
5	10.4090.00R	Back-up ring, 11,2x14x1,5 mm	1	•				10
6	10.3077.28R	O-ring, 1,78x29,87 mm Ni 85	1	•				10
7	10.4088.00R	Back-up ring, 31,2x34x1,5 mm	1	•				5
8	60.8012.51R	Spacer ring, 14,5x34x27,5 mm Sst.	1					3
9	60.8016.31R	Spacer ring, 5,2x19x12,5 mm brass	1					3
10	60.8022.51R	Piston, 5x43,8 mm Sst.	1					3
11	60.8004.51R	Spring, 3,5x17,5x29 mm Sst.	1					3
12	60.8013.31R	Seat holding spacer, brass	1					3
13	60.8015.51R	Seat, 3x14x7,5 mm Sst.	1	•				5
14	14.7418.71R	Ball, 5/32"	1	•				5
15	60.8014.51R	Ball holding piston, Sst.	1					5
16	60.8006.51R	Spring, 1x7,2x14 mm Sst.	1					3
17	11.4574.11R	Hex. nut, M8, Sst.	1					10
18	60.8023.24	Seat, 14mm Sst. + shutter pin, Sst.	1	•				1
19	10.4085.00R	Back-up ring, 29,2x32 mm	1	•				5
20	10.3077.08R	O-ring, 1,78x28,3 mm Ni 85	1	•				10
21	60.8011.31R	Spacer ring,	1					3
22	60.8002.51R	Piston, M8-M10 Sst.	1					3
23	10.4086.00R	Back-up ring, 6,3x8,5x1,5 mm	1	•				5
24	10.3018.08R	O-ring, 1,5x6 mm Ni 85	1	•				10
25	10.4094.00R	Back-up ring, 15,5x20x5 mm	2	•				5
26	10.3180.08R	O-ring, 2,62x15,08 mm Ni 85	1	•				10
27	10.4087.00R	Back-up ring, 23,5x26,5x2,5 mm	1	•				5
28	10.3073.08R	O-ring, 1,78x23,52 mm Ni 85	1	•				10
29	60.8010.51R	Spacer ring, 12,2x26,5x33,5 mm Sst.	1					3
30	10.2012.00R	Stem seal, 12x19x2,8 mm +O-ring	1	•				5
31	60.8001.35R	Housing -VB16, 1/2F Bsp brass	1					1
32	60.0022.31R	Grub screw, brass 1/4 Bsp	1					5
33	11.6500.09R	Plate, 10,9x1,5 mm Cu	1					5
34	60.8005.61R	Spring, 7x42,5x48 mm z.pl.	1					3
35	60.8017.31R	Spring guiding washer, brass	1					3
36	60.8018.61R	Valve regulating nut, M10 z.pl.	1					3
37	15.1042.00R	Roll pin, 3x26 mm Sst.	1					10
38	10.4091.00R	Back-up ring, 21,2x24x1,5 mm	1	•				10
39	10.3072.01R	O-ring, 1,78x20,35 mm Ni 85	1	•				10
40	60.8019.51R	Shutter seat, Sst.	1					3
41	10.3292.08R	O-ring, 4x8 mm Ni 85	1	•				10
42	60.8020.51R	Pin, hex.17 Sst	1					3
43	60.8007.51R	Spring, 0,8x12,2x27 mm Sst.	1					3
44	10.3072.60R	O-ring, 1,78x21,95 mm Ni 85	1	•				10
45	10.4092.00R	Back-up ring, 22,7x25,5x1,5 mm	1	•				5
46	60.8021.31R	Shutter coupl., 1/2F Bsp brass	1					3

Kit	P/N	Description	Q.ty
K1	60.8025.24	Spares kit -VB16, 24x1pcs.	1