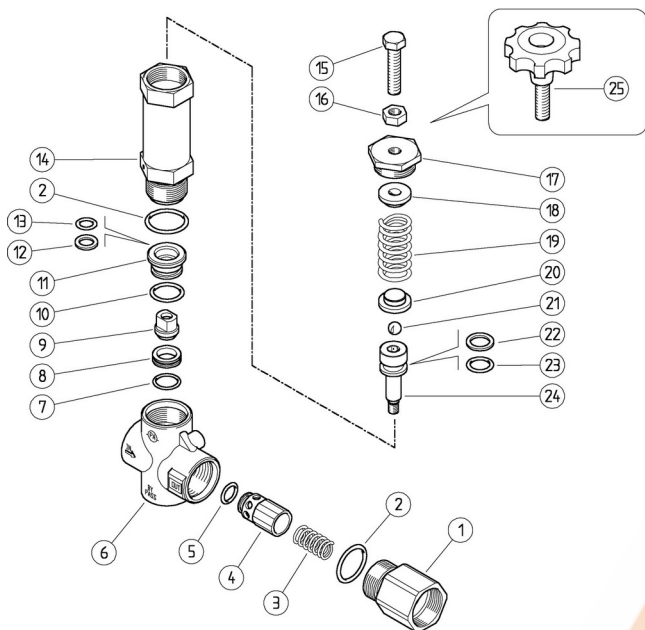


60.5000.00 VB200/150 unload. 1" F Npt
 60.5000.10 VB200/150 unload. 1" F Bsp Viton O-Rings
 60.5000.15 VB200/150 unload. 1" F Bsp
 60.5020.00 VB200/150 unload. 1" F Npt +handwheel

60.5020.15 VB200/150 unloader 1" F Bsp +hand wheel
 60.5025.00 VB200/70 unldr valve, 1" Npt
 60.5025.15 VB200/70 unldr valve, 1" Bsp FF



| Pos. | P/N | Description | Q.ty | K1 | K2 | K3 | K4 | |
|------|-------------|--|------|----|----|----|----|----|
| 1 | 60.5014.31R | Shutter coupl., 1"Npt F brass | 1 | | | | | 3 |
| 1 | 60.5026.31R | Coupling, 1"Bsp F brass (1,2) | 1 | | | | | 3 |
| 2 | 10.3206.01R | O-ring, 2,62x28,25 mm | 2 | • | • | | | 10 |
| 3 | 60.5013.51R | Spring, 1,3x18x29 mm Sst. | 1 | | | | | 10 |
| 4 | 60.5012.99R | Shutter pin, brass+or 5,33x12,06 mm N | 1 | | | | | 5 |
| 5 | 10.3314.00R | O-ring, 5,33x12,06 mm | 1 | • | | | | 10 |
| 5 | 10.3314.10R | O-ring, 5,33x12,06 mm Vi 90 (3) | 1 | | • | | | 10 |
| 6 | 60.5001.35R | Housing-VB200/60-150, 1"Npt brass | 1 | | | | | 1 |
| 6 | 60.5024.35R | Hous.-VB200/150-1"Bsp FF (1,2) | 1 | | | | | 1 |
| 7 | 10.3072.01R | O-ring, 1,78x20,35 mm Ni 85 | 1 | • | • | | | 10 |
| 8 | 60.5002.51R | Seat, 15,8x23x6 mm Sst. | 1 | • | • | | | 5 |
| 9 | 60.5003.51R | Shutter pin, M8 Sst. | 1 | • | • | | | 3 |
| 10 | 10.3195.01R | O-ring, 2,62x20,29 mm Ni 90 | 1 | • | • | | | 10 |
| 11 | 60.5010.31R | Reduction bushing, brass | 1 | | | | | 10 |
| 12 | 10.4080.00R | Back-up ring, 12x18,2x2 mm | 1 | • | • | | | 10 |
| 13 | 10.3234.00R | O-ring, 3,53x10,69 mm | 1 | • | | | | 10 |
| 13 | 10.3234.10R | O-ring, 3,53x10,69 mm Vi 70 (3) | 1 | | • | | | 10 |
| 14 | 60.5009.31R | Piston holder, brass | 1 | | | | | 3 |
| 15 | 60.5011.61R | Valve regulating screw, M10x44 z.pl. (4) | 1 | | | | | 10 |
| 16 | 11.4629.00R | Hex. nut, M10 | 1 | | | | | 10 |
| 17 | 60.5008.31R | Upper plug, M10 brass | 1 | | | | | 10 |
| 18 | 60.5005.31R | Spring guide spacer, brass | 1 | | | | | 10 |
| 19 | 60.5006.61R | Spring, 6x30x62 mm | 1 | | | | | 5 |
| 19 | 60.5031.61R | Spring 5x23x62 mm (5,2) | 1 | | | | | 1 |
| 20 | 60.5007.31R | Spring guide spacer, brass | 1 | | | | | 10 |
| 21 | 14.7461.00R | Ball, 13/32" Sst. | 1 | | | | | 10 |
| 22 | 10.4081.00R | Back-up ring, 15,8x22x2 mm | 1 | • | • | | | 10 |
| 23 | 10.3237.00R | O-ring, 3,53x15,47 mm | 1 | • | | | | 10 |
| 23 | 10.3237.10R | O-ring, 3,53x15,47 mm Vi 70 (3) | 1 | | • | | | 10 |
| 24 | 60.5004.51R | Piston, M8 Sst. | 1 | | | | | 5 |
| 25 | 60.5021.22 | Handwheel, 70mm -M10x44 (6,7) | 1 | | | | | 2 |

| Kit | P/N | Description | |
|-----|------------|---|---|
| K1 | 60.5016.24 | Spares kit -VB200/150, 10x1pcs. | 1 |
| K2 | 60.5019.24 | Spares kit -VB200/150, or. vit.10x1pcs. | 1 |

(1) 60.5000.15 (2) 60.5025.15 (3) 60.5000.10 (4) 60.5000.00 (5) 60.5025.00
 (6) 60.5020.00 (7) 60.5020.15

