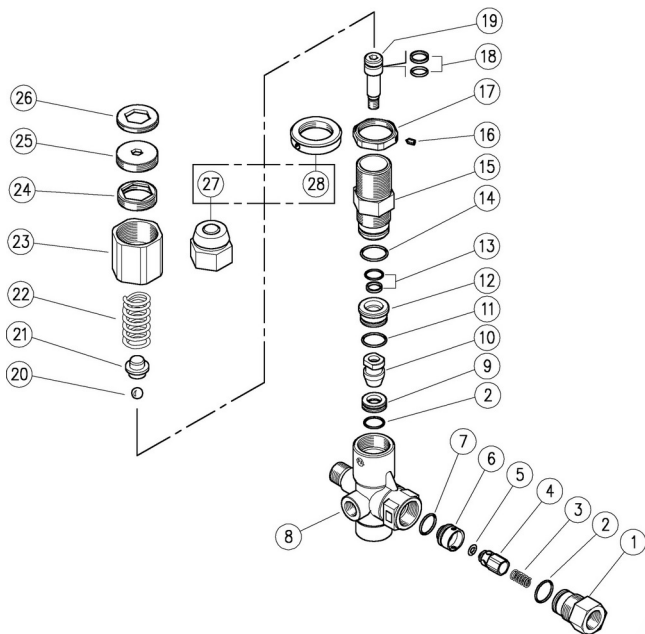


60.1750.00 VB350 S unload. 3/8MF Bsp byp:1/2F



60.1800.00 VB350 S unld.3/8MF Bsp byp:1/2F max/min

Pos.	P/N	Description	Q.ty	K1	K2	K3	K4	
1	60.1811.31R	Shutter coupl., 3/8F Bsp brass	1					5
2	10.3066.01R	O-ring, 1,78x15,6 mm Ni 85	2	•				10
3	60.0053.51R	Spring, 0,7x9x20 mm Sst.	1					10
4	60.9052.93R	Shutter pin, Sst.+or 3x6 mm N90	1					10
5	10.3213.08R	O-ring, 3x6 mm Ni 90	1	•				10
6	60.1807.51R	Shutter seat, Sst.	1					3
7	10.3064.01R	O-ring, 1,78x14 mm Ni 85	1	•				10
8	60.1801.35R	Hous. -VB350, 3/8M c/sunk+1/4F Bsp brs.	1					3
9	60.1809.51R	Seat, 11,6x19x6 mm Sst.	1	•				5
10	60.1808.51R	Shutter pin, M8 Sst.	1	•				3
11	10.3068.01R	O-ring, 1,78x17,17 mm Ni 85	1	•				10
12	60.1810.31R	Spacer ring, 10,3x23,4x12,5 mm brass	1					5
13	60.0979.24	Stem seal, 10x14,9x2,2 mm+O-ring	1	•				5
14	10.3072.01R	O-ring, 1,78x20,35 mm Ni 85	1	•				10
15	60.1805.31R	Piston holder, brass	1					3
16	16.2100.00R	Set screw, DIN914 M4x4 mm	1					10
17	60.1814.31R	Ring nut, M27x1 brass (1)	1					5
18	60.0978.24	Piston seal, 9x14x2,2 mm+O-ring	1	•				5
19	60.1806.51R	Piston, M8 Sst.	1					3
20	14.7443.10R	Ball, 11/32" Sst.	1	•				10
21	60.1813.31R	Spring rest pin, brass	1					5
22	60.1812.61R	Spring, 4,5x15,8x47mm	1					3
23	60.1804.31R	Valve regulating ring nut, brass (1)	1					5
24	60.1803.31R	Ring nut, M27x1 brass (1)	1					3
25	60.1815.31R	Lower adjustment ring nut, M32x1 brass (1)	1					5
26	60.1816.31R	Upper adjustment ring nut, M32x1 brass (1)	1					5
27	60.1727.31R	Valve regulating knob, brass (2)	1					5
28	60.1728.31R	Ring nut, M27x1 brass (2)	1					10

Kit	P/N	Description	
K1	60.1818.24	Spares kit -VB350 12x1pcs.	1

(1) 60.1800.00 (2) 60.1750.00