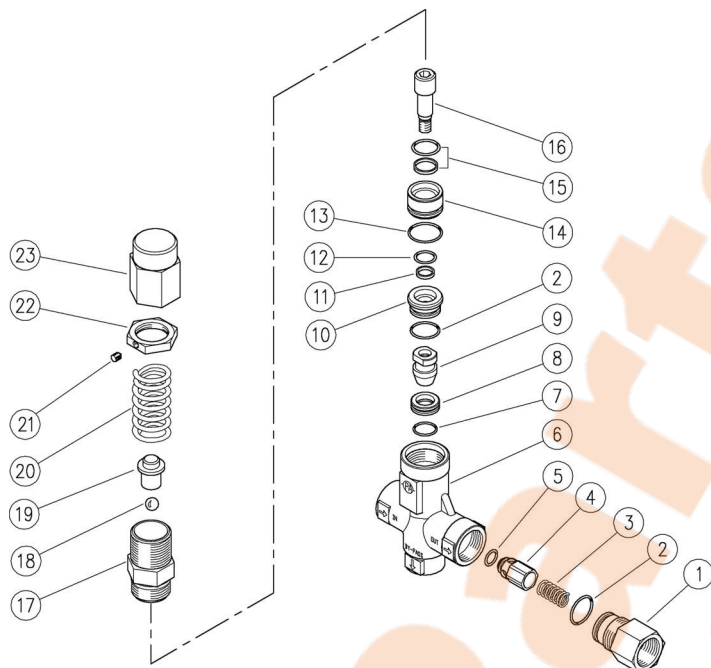


60.1450.00 VB43 unload. 1/2F Bsp Ai303

60.1470.00 VB53 unload. 1/2F Bsp 50MPa- Ai303



Pos.	P/N	Description	Q.ty	K1	K2	K3	K4	
1	60.1404.51R	Shutter coupl., 1/2F Bsp Sst.	1					3
2	10.3068.01R	O-ring, 1,78x17,17 mm Ni 85	2	•				10
3	60.1403.60R	Spring, 0,8x10,7x23 mm aisi316 Sst.	1					10
4	60.1402.51R	Shutter pin, Sst.	1					3
5	10.3230.01R	O-ring, 3,53x7,52 mm Ni 85	1	•				10
6	60.1401.55R	Sst VB23/43 body	1					1
7	10.3066.01R	O-ring, 1,78x15,6 mm Ni 85	1	•				10
8	60.1809.51R	Seat, 11,6x19x6 mm Sst.	1	•				5
9	60.1808.51R	Shutter pin, M8 Sst.	1	•				3
10	60.1410.51R	Spacer ring, 10x23,4x10,5 mm Sst.	1					3
11	10.4022.00R	Back-up ring, 10x12x2 mm	1	•				10
12	10.3059.10R	O-ring, 1,78x11,11 mm Vi 70	1	•				10
13	10.3072.01R	O-ring, 1,78x20,35 mm Ni 85	1	•				10

Pos.	P/N	Description	Q.ty	K1	K2	K3	K4	
14	60.1409.51R	Spacer ring, 10,3x23,5x17,5 mm Sst.	1					3
15	10.2029.00R	Stem seal, 14x19x2,2 mm +O-ring	1	•				4
16	60.1411.51R	Piston, M8 Sst.	1					5
17	60.1406.51R	Piston holder, Sst.	1					5
18	14.7443.10R	Ball, 11/32" Sst.	1					10
19	60.1405.31R	Spring rest pin, brass	1					10
20	60.1407.61R	Spring, 5x21,4x49 mm z.pl.	1					3
20	60.5402.61R	Spring, 5,4x22x64,5 mm z.pl. (1)	1					3
21	16.2100.00R	Set screw, DIN914 M4x4 mm	1					10
22	60.1814.31R	Ring nut, M27x1 brass	1					5
22	60.1728.31R	Ring nut, M27x1 brass (1)	1					10
23	60.1408.31R	Valve regulating knob, M27 brass	1					5
23	60.5405.31R	Valve regulating ring nut, M27x1 brass (1)	1					3

Kit	P/N	Description	Q.ty
K1	60.1452.24	Spares kit -VB43-53, 9x1pcs.	1

(1) 60.1470.00