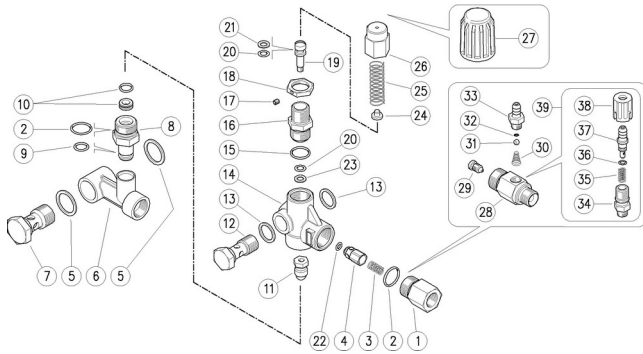


60.0765.00 VB75 unload. 4,5/56

60.0768.10 VB75 valve x:4,5 y:63 O-rings viton



60.0770.00 VB75 unload. X:4,5 Y:64

60.0930.00 VB75 unload. X:18 Y:62-73

Pos.	P/N	Description	Q.ty	K1	K2	K3	K4
1	60.0058.31R	Delivery coupl., 3/8F Bsp brass	1				5
2	10.3070.02R	O-ring, 1,78x18,77 mm Ni 85	2	•	•		10
2	10.3070.10R	O-ring, 1,78x18,77 mm Vi 70 (1)	2				10
3	60.0053.51R	Spring, 0,7x9x20 mm Sst.	1				10
4	60.0052.99R	Shutter pin, brass+o-ring 3x6 mm	1				10
4	60.0052.91R	Shutter pin, brass+o-ring 3x6 mm V (1)	1				10
5	14.4101.00R	Sealing washer, 1/2 Bsp	2				10
6	60.0766.35R	Valve manifold, 1/2F Bsp brass (2)	1				3
6	60.0783.35R	Valve manifold, 1/2F Bsp brass (3)	1				5
6	60.0771.35R	Valve manifold, 1/2F Bsp brass (1,4)	1				3
7	60.1008.31R	Pierced crew, 1/2M Bsp 41,5mm brs.	1				10
8	60.0782.31R	Seat holder, 15x16 mm brass	1				10
8	60.0931.31R	Seat holder, 15 mm brass (3)	1				10
9	10.3109.96R	O-ring, 2,4x10,3 mm Vi 70	1				10
10	60.0259.20R	Seat, 8mm + O-ring, 1,78mm	1	•	•		10
11	60.1708.21R	Rest, M5 Sst.+ball, 11/32" Sst.	1	•	•		5
12	60.1007.31R	Pierced crew, 3/8M Bsp 41,5mm brs.	1				10
13	14.4100.00R	Sealing washer, 3/8 Bsp	2				10
14	60.0784.35R	Valve housing -VB75, brass	1				5
15	10.3068.01R	O-ring, 1,78x17,17 mm Ni 85	1	•	•		10
15	10.3068.10R	O-ring, 1,78x17,17 mm Vi 70 (1)	1				10
16	60.0708.31R	Piston holder, brass	1				10
17	16.2100.00R	Set screw, DIN914 M4x4 mm	1				10
18	60.1018.31R	Ring nut, M18x1 brass	1				10
19	60.0704.99R	Piston, M6 Sst.+or+p/back N	1				10
19	60.0704.92R	Piston, M6 Sst.+or+p/back V. (1)	1				10
20	10.3169.00R	O-ring, 2,62x6,02 mm	2	•	•		10
20	10.3169.10R	O-ring, 2,62x6,02 mm viton (1)	1				10
21	10.4023.00R	Back-up ring, opn. 6,4x11x1,2 mm	1	•	•		10
22	10.3213.00R	O-ring, 3x6 mm	1	•	•		10
22	10.3213.10R	O-ring 3 x 6 mm Viton (1)	1				10
23	10.4024.00R	Back-up ring, 7x11,6x1,2 mm	1	•	•		25
24	60.0310.61R	Spring guide, z.pl.	1				10
25	60.0313.61R	Spring, 3x12,3x41 mm	1				10
26	60.0304.31R	Valve regulating knob, brass	1				5
27	60.0315.84R	Knob VB 7 / 130,plast, hexag.22 **	1				10
28	21.0261.31R	Inject.hous.,M22x1,5M-3/8M Bsp brass	1				3
29	21.0213.51R	Nozzle, M8x1 - 2,1 mm Sst.	1				10
30	21.0160.51R	Tapered spring, Sst. -inject.	1				10
31	14.7420.01R	Ball, 7/32" Sst. Aisi 316	1				10
32	10.3049.00R	O-ring, 1,78x5,28 mm Vi 70	1				10
33	21.0003.31R	Hose barb, 8 - M12x1 mm brass	1				10
34	21.0173.31R	Coupling, M12x1-1/4M Bsp brass	1				10
35	21.0158.51R	Spring, 0,8x7x15 mm Sst.	1				10
36	10.3043.01R	O-ring, 1,78x4,48 mm Vi 70	1				10
37	21.0155.99R	Hose barb, d.8 mm brass+o-ring	1				5
38	21.0171.84R	Inject.knob, 1/4F Bsp black	1				10
39	21.0100.00R	Regul.+h.barb 8-M12mm brs. inje.	1				50

** On request

Kit	P/N	Description	Q.ty
K1	60.0722.24	Spare kit -VB7, 9x5pcs.	1
K2	60.0719.24	VB7/3 valve, repair kit pcs.9x1	1

(1) 60.0768.10 (2) 60.0765.00 (3) 60.0930.00 (4) 60.0770.00