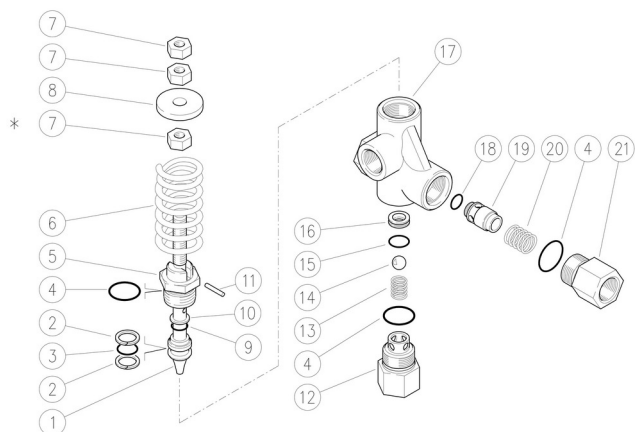


60.0450.00 VB80/150 unload. 1/2F Bsp Ai316
 60.0450.05 VB80/150 unload. 1/2F Npt Ai316
 60.0450.60 VB80/280 unload. 1/2F Bsp Ai316

60.0458.15 VB 80A/150 unl. 1/2Bsp Ai316 white spring -
 60.0458.28 VB 80A/280 unl. 1/2Bsp Ai316 blue spring -



| Pos. | P/N | Description | Q.ty | K1 | K2 | K3 | K4 | |
|------|-------------|---------------------------------------|------|----|----|----|----|----|
| 1 | 60.0432.60R | Piston, M10 aisi316 Sst. | 1 | | | | | 3 |
| 2 | 10.4014.00R | Back-up ring, opn. 18x13,5x1,2 mm | 2 | • | • | | | 10 |
| 3 | 10.3178.10R | O-ring, 2,62x13,1 mm Vi 70 | 1 | • | • | | | 10 |
| 4 | 10.3072.10R | O-ring, 1,78x20,35 mm Vi 70 | 3 | • | • | | | 10 |
| 5 | 60.0404.60R | Piston holder, aisi316 Sst. | 1 | | | | | 3 |
| 6 | 60.0412.61R | Spring, 7,5x35x70 mm blue (1,2) | 1 | | | | | 10 |
| 6 | 60.0411.61R | Spring, 6,5x33x70 mm white (3,4,5) | 1 | | | | | 3 |
| 7 | 11.4627.50R | Hex. nut, M10, Sst. | 3 | | | | | 10 |
| 8 | 60.0406.31R | Spring holding washer, brass | 1 | | | | | 10 |
| 9 | 10.3174.10R | O-ring, 2,62x9,93 mm Vi 70 | 1 | • | • | | | 10 |
| 10 | 10.4015.00R | Back-up ring, 10x14,5x1,2 mm | 1 | • | • | | | 10 |
| 11 | 15.1032.00R | Roll pin, 3x18 mm Sst. | 1 | | | | | 10 |
| 12 | 60.0405.60R | Suction coupl., 1/2F Bsp aisi316 Sst. | 1 | | | | | 3 |
| 12 | 60.0438.60R | Sst Ai 316 inlet fitting 1/2 Npt (4) | 1 | | | | | 1 |
| 13 | 60.0410.60R | Spring, 1,6x11,5x20 mm aisi316 Sst. | 1 | | | | | 5 |
| 14 | 14.7461.01R | Ball, 13/32" Sst. ai.316 | 1 | • | | | | 10 |
| 15 | 10.3060.10R | O-ring, 1,78x12,42 mm Vi 70 | 1 | • | • | | | 10 |
| 16 | 60.0408.60R | Seat, 8,5x15,9x4,5 mm aisi316 Sst. | 1 | • | | | | 3 |
| 17 | 60.0431.60R | Housing -VB80, 1/2F Bsp aisi316 Sst. | 1 | | | | | 1 |
| 17 | 60.0436.60R | Valve housing VB80 Npt Ai306 (4) | 1 | | | | | 1 |
| 18 | 10.3292.10R | O-ring, 4x8 mm Vi 70 | 1 | • | • | | | 10 |
| 19 | 60.0403.60R | Shutter pin, aisi316 Sst. | 1 | | | | | 3 |
| 20 | 60.0409.60R | Spring, 0,8x15,4x13 mm aisi316 Sst. | 1 | | | | | 5 |
| 21 | 60.0402.60R | Shutter coupl., 1/2F Bsp aisi316 Sst. | 1 | | | | | 3 |
| 21 | 60.0437.60R | Sst Ai.316 outlet connect.1/2 Npt (4) | 1 | | | | | 5 |

| Kit | P/N | Description | |
|-----|------------|----------------------------------------|---|
| K1 | 60.0445.24 | Repair kit -VB80, aisi316 Sst. 9x1pcs. | 1 |
| K2 | 60.0446.24 | Seals kit -VB80+O-ring, FKM 7x1pcs. | 1 |

(1) 60.0450.60 (2) 60.0458.28 (3) 60.0450.00 (4) 60.0450.05 (5) 60.0458.15

