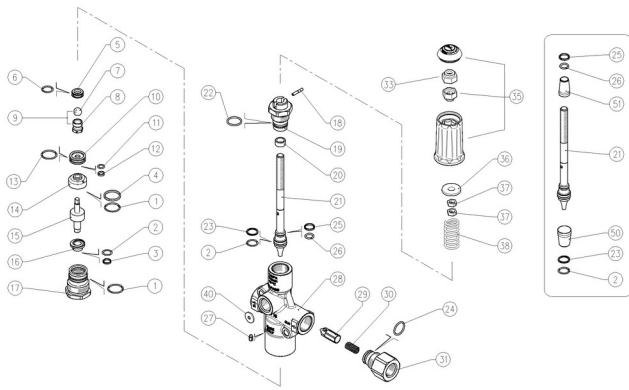


60.2800.00 VB80/280 Zero Unload.-flow activated 1/2Bsp



Pos.	P/N	Description	Q.ty	K1	K2	K3	K4
1	10.3073.08R	O-ring, 1,78x23,52 mm Ni 85	2	•			10
2	10.3060.00R	O-ring, 1,78x12,42 mm	2	•			10
3	10.4165.00R	Back-up ring,	1	•			3
4	10.4060.00R	Back-up ring, 22x24x2 mm	1	•			10
5	60.2803.51R	Sst seat, 10 mm	1	•			5
6	10.3064.01R	O-ring, 1,78x14 mm Ni 85	1	•			10
9	60.2816.21R	Shutter pin, M8 +ball, 1/2"	1	•			5
10	60.2806.31R	9 mm brass piston ring	1				5
11	10.3058.01R	O-ring, 1,78x10,82 mm	1	•			10
12	10.4061.00R	Back-up ring, 9x11x2 mm	1	•			10
13	10.3070.02R	O-ring, 1,78x18,77 mm Ni 85	1	•			10
14	60.2807.31R	9x26,9 mm brass piston ring	1				5
15	60.2802.51R	Sst pin	1				5
16	60.2808.31R	10,7 mm brass piston ring	1				5
17	60.2810.31R	Lower plug, brass	1				3
18	15.1021.00R	Roll pin, 3x14 mm Sst.	1				10
19	60.2804.31R	Piston holder, brass	1				5
20	30.0728.84R	Bushing, 9x13x6 mm plast. black	1	•			10
21	60.2813.51R	Sst. valve piston	1				5
22	10.3068.01R	O-ring, 1,78x17,17 mm Ni 85	1	•			10
23	10.4161.00R	Back-up ring, 18 mm	1	•			3
24	10.3072.60R	O-ring, 1,78x21,95 mm Ni 85	1	•			10
25	10.4162.00R	Back-up ring, 14,2 mm	1	•			3
26	10.3057.00R	O-ring, 1,78x9,25 mm	1	•			10
27	16.2203.00R	Set screw, DIN915 M6x10 mm Sst.	1				10
28	60.2805.35R	Housing -VB80/280.Zero,1/2Bsp F bras.	1				3
29	60.2801.51R	Sst shutter	1				5
30	60.2812.51R	Sst spring, 1,5x12,5x32 mm	1				10
31	60.2809.31R	Shutter coupl., 1/2F Bsp brass	1				3
33	11.4589.10R	Hex. locknut, M8	1				10
35	60.0148.24	Knob + Plug -PulsarRv	1				5
36	14.3720.40R	Washer, 9,2x24x0,5 mm	1				10
37	11.4573.31R	Hex. nut, M8, brass	2				10
38	60.0033.61R	Spring, 5,7x26x53 mm blue	1				5
40	60.2624.31R	Nozzle, 4,5 mm brass x1/2 Bsp **	1				10
40	60.2625.31R	Nozzle, 5,5 mm brass x 1/2 Bsp **	1				10
50	10.4407.00R	Seal frame >VB60-80 zero **	1				1
51	10.4408.00R	Seal frame >VB60-80 zero **	1				1

** On request

Kit	P/N	Description	
K1	60.2814.24	Spares kit -VB80/280.Zero, 16x1pcs.	1