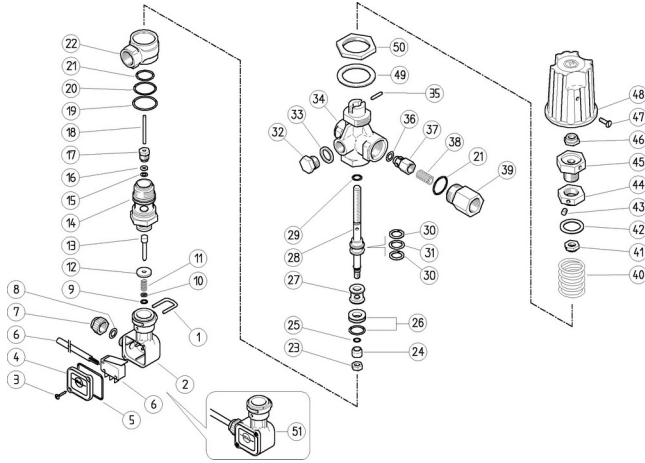


60.2350.00 VB9 unload. 3/8F Bsp +el.sw.+knob



60.2365.00 VB9 unload. 3/8F+2x1/4 Bsp F+el.sw.+knob

Pos.	P/N	Description	Q.ty	K1	K2	K3	K4	
1	29.0087.51R	U-bolt, Sst.	1					10
2	29.0089.84R	Housing, PR5 PA black	1	•				10
3	16.3020.00R	S/tapp. screw, 2,5x12mm chrom	2	•				10
4	29.0088.84R	Lid, PR5 PA black	1	•				10
5	10.3206.01R	O-ring, 2,62x28,25 mm	1	•	•			10
6	12.5006.00R	Cable, 3x0,75 L.1000 mm+ Microswitch	1	•				5
7	29.0109.84R	Locknut for cable gland, PA red	1	•				10
8	10.3169.00R	O-ring, 2,62x6,02 mm	1	•	•			10
9	10.3038.00R	O-ring, 1,78x3,68 mm	1	•				10
10	14.3519.00R	Washer, 4x8x0,5 mm brass	1					10
11	60.2303.51R	Spring, 1,1x8x20 mm Sst.	1					10
12	29.0086.31R	Washer, 4x16x2,5 mm brass	1					10
13	60.2351.31R	Micro-switch piston, brass	1					10
14	60.2353.31R	Seat holder, brass	1					3
15	10.3165.00R	O-ring, 2,62x2,84 mm Vi 70	1	•				10
16	10.4018.00R	Back-up ring, 3,2x7,5x1,2 mm	1	•				10
17	30.4115.31R	Front Plug, M10x1 brass	1					10
18	60.2352.51R	Parallel pin, 3x41mm Sst.	1					10
19	10.3073.00R	O-ring, 1,78x23,52 mm	1	•				10
20	10.3072.50R	O-ring, 1,78x21,95 mm	1	•				10
21	10.3070.02R	O-ring, 1,78x18,77 mm Ni 85	2	•				10
22	60.0733.35R	Valve manifold, brass	1					5
23	11.4540.00R	Hex. nut, M6, Sst.	1					10
24	60.2205.61R	Sst shutter	1	•				10
25	10.3001.01R	O-ring, 1x4 mm Ni 85	1	•				10
26	60.2221.20R	Seat+O-ring	1	•				3
27	60.2210.31R	Spacer ring, 8,5x16,8x14,5 mm brass	1					10
28	60.2202.51R	Piston, M6-M8 Sst.	1					5
29	10.3170.08R	O-ring, 2,62x7,6 mm Ni 85	1	•				10
30	10.4021.00R	Back-up ring, opn. 11,5x15,9x1,2 mm	2	•				10
31	10.3175.00R	O-ring, 2,62x10,77 mm	1	•				10
32	28.0013.31R	Plug, brass 1/4 Bsp	1					25
33	14.3911.00R	Washer, 13,5x19x1,5 mm Cu	1					10
34	60.2201.35R	Housing -VB9, 3/8F-1/4F Bsp brass	1					5
34	60.2211.35R	Housing -VB9, 3/8F+2x1/4F Bsp brass (1)	1					5
35	15.1021.00R	Roll pin, 3x14 mm Sst.	1					10
36	10.3213.00R	O-ring, 3x6 mm	1	•				10
37	60.0052.99R	Shutter pin, brass+o-ring 3x6 mm	1					10
38	60.0053.51R	Spring, 0,7x9x20 mm Sst.	1					10
39	60.0058.31R	Delivery coupl., 3/8F Bsp brass	1					5
40	60.2203.61R	Spring, 4,2x27,4x31 mm z.pl.	1					10
41	60.2207.31R	Ring nut, M8 brass	1					10
42	60.2208.84R	Washer, 19x26x1,5 mm PA black	1					10
43	16.2105.00R	Set screw, DIN913 M5x6 mm	1					10
44	60.2252.31R	Ring nut, M16x1 brass	1					10
45	60.2253.31R	Regulating pin, brass	1					10
46	11.4589.10R	Hex. locknut, M8	1					10
47	16.1838.00R	Screw, DIN7985 M4x10 mm z.pl.	1					10
48	60.2251.84R	Valve regulating knob, PA black	1					5
49	14.3582.00R	Washer, 30,5x42x2 mm	1					10
50	60.2254.31R	Ring nut, M30 brass	1					10
51	29.0096.24R	Casing kit -PR5, complete 40bar	1					5

Kit	P/N	Description	
K1	60.2355.24	Repair kit -VB9/01+PR5, 14x1pcs.	1
K2	29.0127.24R	PR 5 pl.housing kit	10

(1) 60.2365.00