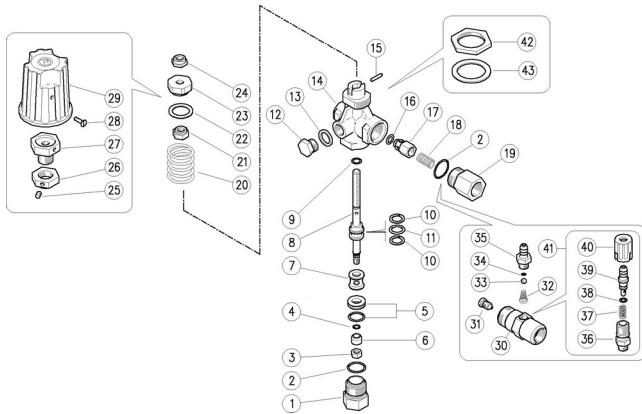


60.2200.00 VB9 unload. 3/8F Bsp



60.2250.00 VB9 unload. 3/8F Bsp +knob

Pos.	P/N	Description	Q.ty	K1	K2	K3	K4
1	60.2204.31R	Seat holder, 3/8F Bsp brass	1				10
2	10.3070.02R	O-ring, 1,78x18,77 mm Ni 85	2	•			10
3	11.4540.00R	Hex. nut, M6, Sst.	1				10
4	10.3001.01R	O-ring, 1x4 mm Ni 85	1	•			10
5	60.2221.20R	Seat+O-ring	1	•			3
6	60.2205.61R	Sst shutter	1	•			10
7	60.2210.31R	Spacer ring, 8,5x16,8x14,5 mm brass	1				10
8	60.2202.51R	Piston, M6-M8 Sst.	1				5
9	10.3170.08R	O-ring, 2,62x7,6 mm Ni 85	1	•			10
10	10.4021.00R	Back-up ring, opn. 11,5x15,9x1,2 mm	2	•			10
11	10.3175.00R	O-ring, 2,62x10,77 mm	1	•			10
12	28.0013.31R	Plug, brass 1/4 Bsp	1				25
13	14.3911.00R	Washer, 13,5x19x1,5 mm Cu	1				10
14	60.2201.35R	Housing -VB9, 3/8F-1/4F Bsp brass	1				5
15	15.1021.00R	Roll pin, 3x14 mm Sst.	1				10
16	10.3213.00R	O-ring, 3x6 mm	1	•			10
17	60.0052.99R	Shutter pin, brass+o-ring 3x6 mm	1				10
18	60.0053.51R	Spring, 0,7x9x20 mm Sst.	1				10
19	60.0058.31R	Delivery coupl., 3/8F Bsp brass	1				5
20	60.2203.61R	Spring, 4,2x27,4x31 mm z.pl.	1				10
21	60.2207.31R	Ring nut, M8 brass	1				10
22	60.2208.84R	Washer, 19x26x1,5 mm PA black	1				10
23	60.2209.31R	Ring nut, M8 brass (1)	1				10
24	11.4589.10R	Hex. locknut, M8	1				10
25	16.2105.00R	Set screw, DIN913 M5x6 mm (2)	1				10
26	60.2252.31R	Ring nut, M16x1 brass (2)	1				10
27	60.2253.31R	Regulating pin, brass (2)	1				10
28	16.1838.00R	Screw, DIN7985 M4x10 mm z.pl. (2)	1				10
29	60.2251.84R	Valve regulating knob, PA black (2)	1				5
30	21.0261.31R	Inject.hous.,M22x1,5M-3/8M Bsp brass	1				3
31	21.0213.51R	Nozzle, M8x1 - 2,1 mm Sst.	1				10
32	21.0160.51R	Tapered spring, Sst. -inject.	1				10
33	14.7420.01R	Ball, 7/32" Sst. Aisi 316	1				10
34	10.3049.00R	O-ring, 1,78x5,28 mm Vi 70	1				10
35	21.0003.31R	Hose barb, 8 - M12x1 mm brass	1				10
36	21.0173.31R	Coupling, M12x1-1/4M Bsp brass	1				10
37	21.0158.51R	Spring, 0,8x7x15 mm Sst.	1				10
38	10.3043.01R	O-ring, 1,78x4,48 mm Vi 70	1				10
39	21.0155.99R	Hose barb, d.8 mm brass+o-ring	1				5
40	21.0171.84R	Inject.knob, 1/4F Bsp black	1				10
41	21.0100.00R	Regul.+h.barb 8-M12mm brs. inje.	1				50
42	60.2254.31R	Ring nut, M30 brass (2)	1				10
43	14.3582.00R	Washer, 30,5x42x2 mm (2)	1				10

Kit	P/N	Description	Q.ty
K1	60.2226.24	Spares kit -VB9 9x1pcs.	1

(1) 60.2200.00 (2) 60.2250.00