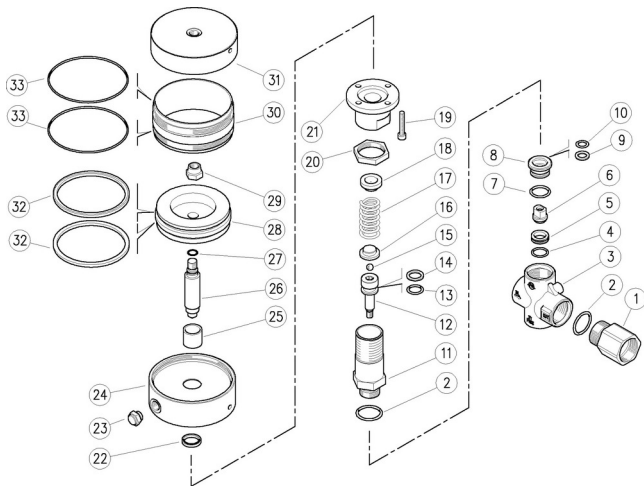


60.5300.00 VRPP 170 regul.valv. 1"F Bsp -air contr.



Pos.	P/N	Description	Q.ty	K1	K2	K3	K4
1	60.5026.31R	Coupling, 1"Bsp F brass	1				3
2	10.3206.01R	O-ring, 2,62x28,25 mm	2	•			10
3	60.5024.35R	Hous.-VB200/150-1"Bsp FF	1				1
4	10.3072.01R	O-ring, 1,78x20,35 mm Ni 85	1	•			10
5	60.5002.51R	Seat, 15,8x23x6 mm Sst.	1	•			5
6	60.5003.51R	Shutter pin, M8 Sst.	1	•			3
7	10.3195.01R	O-ring, 2,62x20,29 mm Ni 90	1	•			10
8	60.5010.31R	Reduction bushing, brass	1				10
9	10.4080.00R	Back-up ring, 12x18,2x2 mm	1	•			10
10	10.3234.00R	O-ring, 3,53x10,69 mm	1	•			10
11	60.5301.31R	Spring holder, brass	1				1
12	60.5004.51R	Piston, M8 Sst.	1				5
13	10.3237.00R	O-ring, 3,53x15,47 mm	1	•			10
14	10.4081.00R	Back-up ring, 15,8x22x2 mm	1	•			10
15	14.7461.00R	Ball, 13/32" Sst.	1				10
16	60.5005.31R	Spring guide spacer, brass	1				10
17	60.5006.61R	Spring, 6x30x62 mm	1				5
18	60.5303.31R	Spring guide spacer, brass	1				1
19	16.1897.22R	Screw, DIN912 M6x22 mm z.pl.	4				5
20	60.5302.31R	Ring nut, M36 brass	1				1
21	60.5304.31R	Piston holder, brass	1				1
22	10.2020.25R	Stem seal, 20x25x4 mm	1	•			5
23	11.8901.14R	Pneum. filter, G1/4	1				3
24	60.5322.41R	Valve head, Al	1				3
25	60.5323.85R	Bushing, opn. 20x24x14,8 mm PTFE	1	•			3
26	60.5321.61R	Piston, 20-M12x94 mm	1				3
27	10.3058.01R	O-ring, 1,78x10,82 mm	1	•			10
28	60.5326.41R	Piston, Al	1				3
29	11.4740.00R	Hex. nut, M12	1				10
30	60.5324.46R	Jacket, Al	1				3
31	60.5325.41R	Valve bottom, Al	1				3
32	10.2100.00R	Piston seal, 90x100x4,5 mm	2	•			5
33	10.3106.00R	O-ring, 2x103 mm	2	•			5

Kit	P/N	Description	Q.ty
K1	60.5016.24	Spares kit -VB200/150, 10x1pcs.	1
K2	60.5327.24	Spares kit -pneum. cylinder, 5x1pcs.	1



Altec  
hopedruk