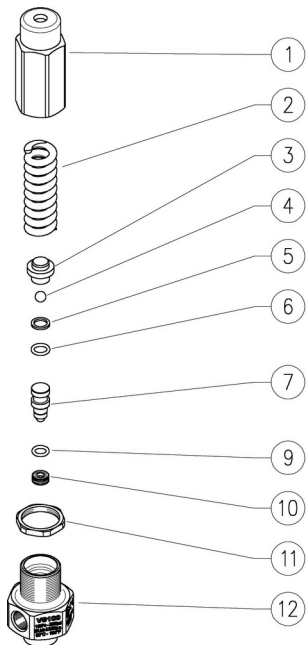


60.0470.60 VS100-sst. Ai316safety valv. 1/4F Bsp -2



Pos.	P/N	Description	Q.ty	K1	K2	K3	K4	
1	60.0475.31R	Valve regulating knob, M24 brass	1					10
2	60.0477.51R	Spring, 4,5x14,9x60 mm sst..	1					5
3	60.0474.51R	Ball holding piston, sst.	1					5
4	14.7421.50R	Ball, 1/4" Sst.	1					10
5	10.4008.00R	Back-up ring, opn. 8x11x1,2 mm	1					10
6	10.3055.10R	O-ring, 1,78x7,66 mm Vi 70	1					10
7	60.0478.21R	Piston Ai316 Sst.+ball	1					10
9	10.3052.10R	O-ring, 1,78x6,76 mm vi	1					25
10	60.0472.60R	Seat, 4,2mm Ai316	1					3
11	60.0476.31R	Ring nut, M24x1,25 brass	1					10
12	60.0471.60R	Housing -VS100- 1/4 Bsp FF sst.Ai316	1					1



Altec
 hogedrukonderdelen & accessoires