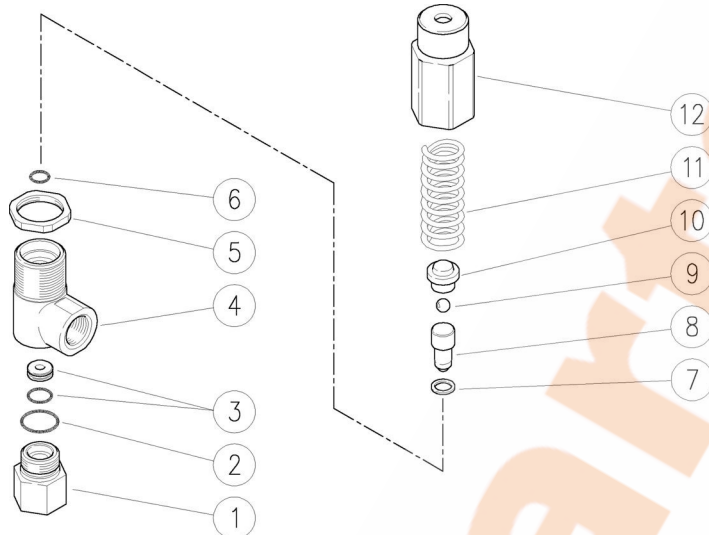


60.0515.00 VS220 safety valv. 3/8F Bsp -1 inl.port
 60.0525.00 VS220 safety valv. 3/8F Bsp -2 inl.ports

60.0540.00 VS170 safety valv. 3/8F Bsp -1 inl.port



Pos.	P/N	Description	Q.ty	K1	K2	K3	K4	Pos.	P/N	Description	Q.ty	K1	K2	K3	K4
1	60.0306.31R	Bypass coupl., 3/8F Bsp brass	1				10	7	10.4025.00R	Back-up ring, 8x11x1,2 mm	1	•			10
2	10.3066.00R	O-ring, 1,78x15,6 mm	1	•			10	8	60.0514.21R	Piston +ball, 7/32" Sst.	1				10
3	60.0511.20R	Seat, 4,4mm +O-ring, 1mm NBR85	1	•			10	9	14.7421.50R	Ball, 1/4" Sst.	1				10
4	60.0517.35R	Housing -VS170-220, 3/8F Bsp brass	1				5	10	60.0503.31R	Ball holding piston, brass	1				10
4	60.0526.35R	Housing -VS170-220, 3/8Bsp FF brass (1)	1				5	11	60.0516.61R	Spring, 4,3x14,3x53 mm z.pl.	1				10
5	60.0523.31R	Ring nut, M24x1,25 brass	1				10	11	60.0502.61R	Spring, 4x14,5x53 mm z.pl. (2)	1				5
6	10.3055.00R	O-ring, 1,78x7,66 mm	1	•			10	12	60.0532.31R	Valve regulating knob, M24 brass	1				10

Kit	P/N	Description	Q.ty
K1	60.0535.24	Spares kit -VS170-220, 5x1pcs.	1

(1) 60.0525.00 (2) 60.0540.00