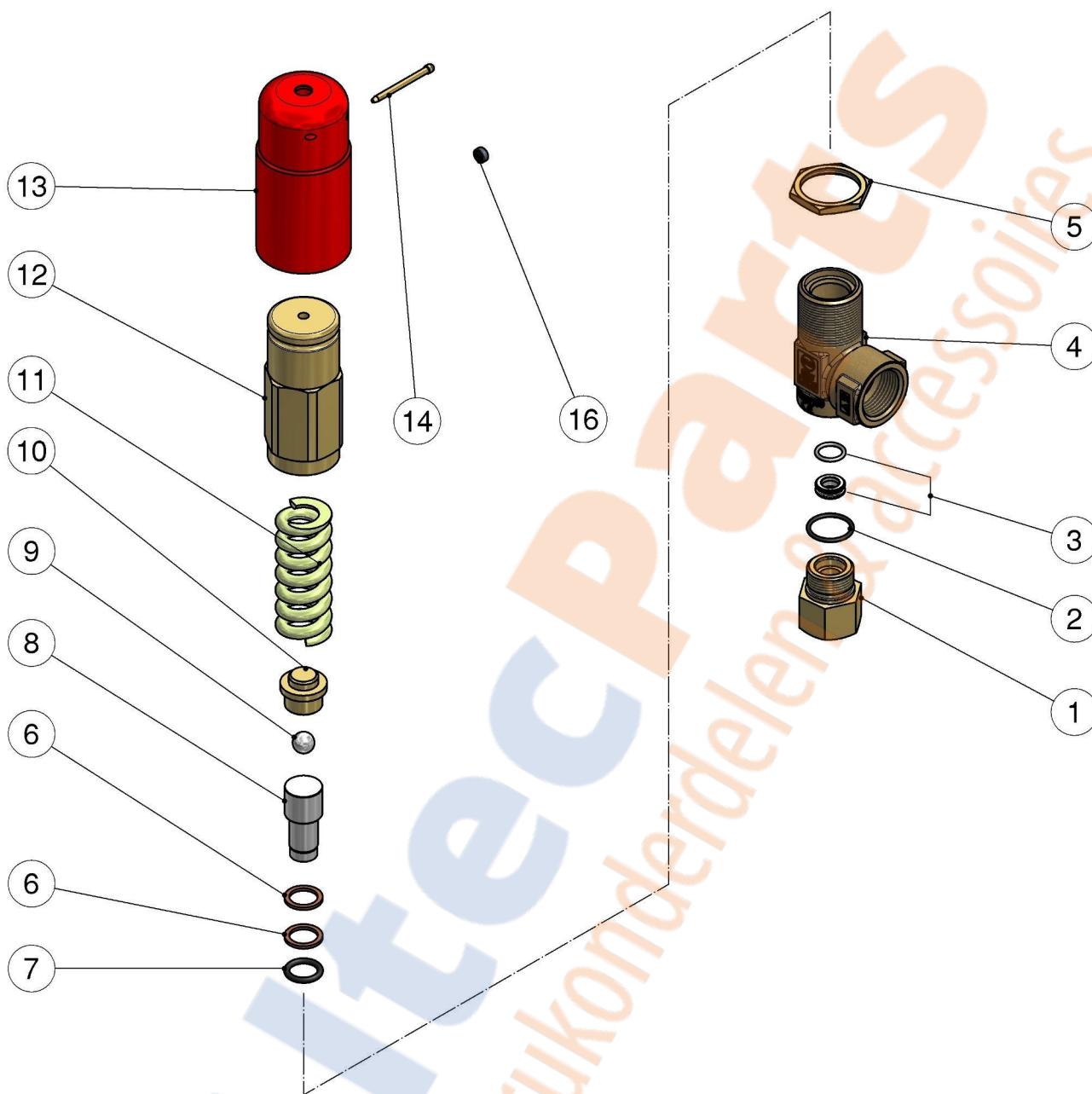


60.5100.00 VS200/180 saf.val. 3/4F Npt byp:1/2F
 60.5100.15 VS200/180 saf.val. 3/4F Bsp byp:1/2F

60.5115.00 VS200/180 Saf.val. 3/4F-1/2F Bsp to block



Pos.	P/N	Description	Q.ty	K1	K2	K3	K4
1	60.5104.31R	Coupling, 1/2F Npt brass (1)	1				3
1	60.5111.31R	Seat holder, 1/2F Bsp brass (2,3)	1				3
2	10.3070.02R	O-ring, 1,78x18,77 mm Ni 85	1	•			10
3	60.0259.20R	Seat, 8mm + O-ring, 1,78mm	1	•			10
4	60.5101.35R	Housing -VS200/180, 3/4F Npt brass (1)	1				3
4	60.5109.35R	Housing -VS200/180, 3/4F Bsp brass (2,3)	1				3
5	60.5107.31R	Ring nut, M30 brass	1				10
6	10.4050.00R	Back-up ring, 13,5x18x1,5 mm	2	•			10
7	10.3178.00R	O-ring, 2,62x13,1 mm	1	•			10

Pos.	P/N	Description	Q.ty	K1	K2	K3	K4
8	60.5108.21R	Piston, Sst. + ball, 13/32" Sst.	1	•			5
9	14.7461.00R	Ball, 13/32" Sst.	1				10
10	60.5105.31R	Spring guide spacer, brass	1				3
11	60.5102.61R	Spring, 6x26,5x67 mm z.pl.	1				3
12	60.5106.31R	Valve regulating ring nut, brass	1				3
13	60.5117.41R	Knob x block. press al-red (3)	1				3
14	60.5114.31R	4 mm brass pin (3)	1				5
16	13.1214.03R	14 mm lead seal (3)	1				5

Kit	P/N	Description	Q.ty
K1	60.5110.24	Spares kit -VS200/180, 6x1pcs.	1

(1) 60.5100.00 (2) 60.5100.15 (3) 60.5115.00