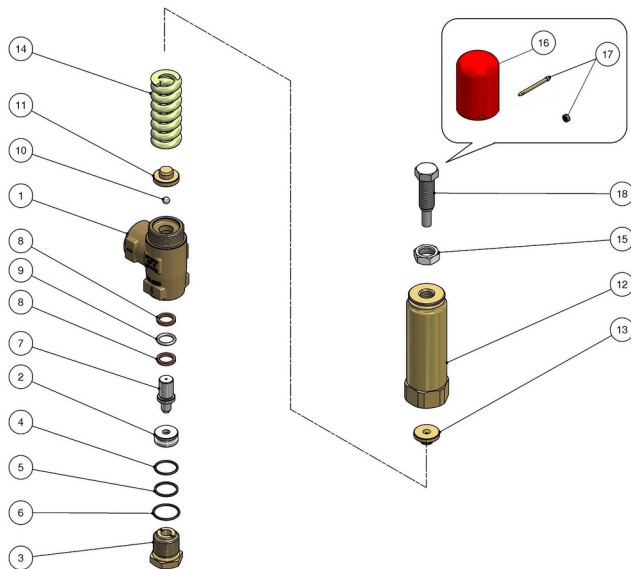


60.5200.00 VS500 safety valv. 1/2F Bsp byp:3/4F
 60.5212.00 VS500 saf.valv.1/2F Bsp byp:3/4F to bloc

60.5230.00 VS500/310 safety valv. 1/2F Bsp byp:3/4F
 60.5232.00 VS500/310 saf.valv.1/2F Bsp byp:3/4F to set



Pos.	P/N	Description	Q.ty	K1	K2	K3	K4	
1	60.5201.35R	Housing - VS500, 1/2"Bsp brass	1					1
2	60.5203.51R	Seat, 7x22x10 mm Sst.	1	•				5
3	60.5204.31R	Coupl., M24x1M-3/8F Bsp brass	1					3
4	10.3070.02R	O-ring, 1,78x18,77 mm Ni 85	1	•				10
5	10.4030.00R	Back-up ring, 19,2x22x1,5 mm	1	•				10
6	10.3072.60R	O-ring, 1,78x21,95 mm Ni 85	1	•				10
7	60.5202.51R	Piston, 16,5x37 mm Sst.	1	•				3
8	10.4031.00R	Back-up ring, 13x17,5x2,5 mm	2	•				10
9	10.3178.01R	O-ring, 2,62x13,1 mm Ni 85	1	•				10
10	14.7421.50R	Ball, 1/4" Sst.	1					10
11	60.5205.31R	Spring rest pin, brass	1					3
12	60.5208.31R	Spring holder, brass	1					3
13	60.5207.31R	Spring guide spacer, brass	1					3
14	60.5206.61R	Spring, 7x28,5x70 mm z.pl. (1,2)	1					3
14	60.5211.61R	Spring, 6x20,5x70 mm dacr. (3,4)	1					3
15	11.4760.00R	Hex. nut, M14	1					10
17	60.5114.31R	4 mm brass pin (2)	1					5
17	13.1214.03R	14 mm lead seal (2) **	1					5
16	60.0598.41R	Knob x block. press al-red (2)	1					5
18	60.5209.51R	Valve regulating screw, M14x58 Sst.	1					3

** On request

Kit	P/N	Description	
K1	60.5210.24	Spares kit -VS500, 7x1pcs.	1

(1) 60.5200.00 (2) 60.5212.00 (3) 60.5230.00 (4) 60.5232.00