

- ✓ Complete stainless steel
- ✓ Maintenance free
- ✓ Live swivel
- ✓ Sliding bearing system

Application

Hose reels

TECHNICAL DATA

Pressure 350 bar (35 MPa)
Temperature 120°C
RPM max. 30 rpm
Torque max. 50 Nm

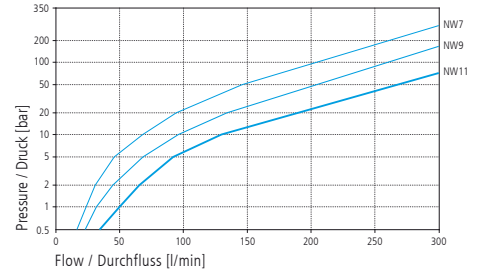
Body stainless steel

Inner part stainless steel
Seal O-ring

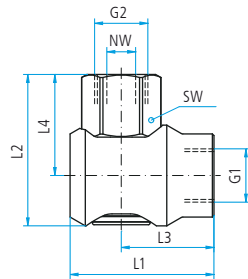
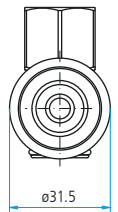
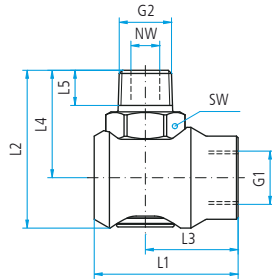
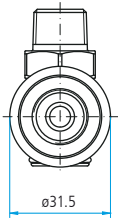
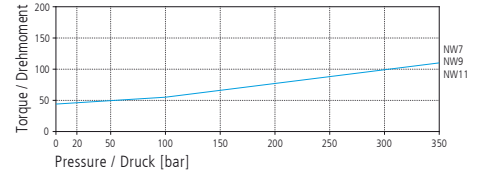
Bearing sliding bearings

Throughput medium pH 3 - 12
 10 µm filtered
 20 bar compressed air

Flow / Durchfluss



Torque / Drehmoment



WDEI

Part No.	G1 (F)	G2 (kM)	NW	L1	L2	L3	L4	L5	SW	Weight
43.411B	G1/4" F	G1/4" kM	7	45	48	29	33	10	22	6735g
43.412B	G3/8" F	G3/8" kM	9	45	49	29	34	11	22	6210g
43.413B	G1/2" F	G1/2" kM	11	50	53	34	38	12	22	6135g

Part No.	G1 (F)	G2 (F)	NW	L1	L2	L3	L4	SW	Weight
43.421B	G1/4" F	G1/4" F	7	45	46	29	31	22	7060g
43.422B	G3/8" F	G3/8" F	9	45	47	29	32	22	6185g
43.423B	G1/2" F	G1/2" F	11	50	50	34	35	24	5710g

43.922	NW 7-11 Seal kit
---------------	------------------



These products are only available in an OEM-box which includes 25 swivels.

Legend

M.. = metric thrust, ..M = male, F = female, G = gas pipe thrust, QV = quick connects, SV = profile ring fitting
 D = diameter, k = conical, L = length, NW = nominal width, SW = wrench size